

62

B

**Our 30th Anniversary Year**  
**1927 - 1957**  
30 Years Specializing in Lilies



LIBRARY  
RECEIVED  
APR 23 1957  
U. S. Department of Agriculture

**GOLDEN SPLENDOR**

Page 5

*Romaine B. Ware - Lilies*  
CANBY, OREGON

# The New Golden Age of Gardening

*Never before have gardeners been offered such a galaxy of truly fine flowers.*

*Never before has it been possible to plant the finest with such assurance of success.*

*Even the tiniest gardens may boast exotic beauty never dreamed of before.*



SUNBURST

**Our 30th Anniversary Year  
1927 - 1957  
30 Years Specializing in Lilies**

This business was established in 1927 by Miss Julia Clark and for thirty years has specialized in the world's finest lilies grown for America's home gardeners. As we start our fourth decade, we thank all of you for permitting us to serve you and pledge our best efforts to serve you better in the years to come.



PICTURE IN YOUR OWN GARDEN THE ALMOST ORCHID-LIKE SUNBURST LILIES PLANTED INFORMALLY

Today even the smallest garden in the most isolated outpost can enjoy the newest and finest plants. Modern transportation and packaging make possible the shipping of bulbs and plants to the far corners of the world with perfect assurance they will arrive fresh and full of vitality. Technologies developed in recent years together with vastly improved plant varieties have banished much of the gamble and hazard of planting new things with which one may not be familiar.

American gardeners came into the Golden Age of Gardening with opportunity beyond their wildest dreams. Not only in the lily field but with all flowers and plants, great improvements have been made in recent years and no longer need we be satisfied with the old types and varieties. New plants are not only new in appearance but in performance as well, thanks to the host of plant breeders all over the world. There's no excuse for gardens to be cluttered with old-fashioned, inferior plants when new and better things are so readily available.

Today's new lilies are very different from older varieties. Not only are they much more beautiful but they are hardier, more adaptable to a wide variety of soils and climatic conditions AND they are vastly improved in their resistance to disease. Take a look at the offerings herein and you'll see why we call this the New Golden Age of Gardening.

LILY BULBS STORED AND FORGOTTEN IN HER SPARE ROOM FOR FIVE MONTHS—THEN PLANTED, THEY GREW AND BLOOMED

From Lakemont, Georgia

"In '55 I ordered three of your Olympic Hybrids for a dollar but was ill when they arrived in October and could not plant them. In fact they were stored with my Glad bulbs in the unopened cellophane bags and completely forgotten until the following April. When I discovered them, I rushed to the perennial border and stuck them into the ground thinking, 'there you've thrown away another dollar' for I certainly did not expect them to do anything after such neglect. BUT, all three sent up stalks and one flowered with an eight and one-half inch bloom—the most beautiful yellow I can imagine."

"In the fall I replanted them to another spot. Imagine my delight when I discovered the yellow one that bloomed yielded thirteen bulblets and the other two had produced fine big bulbs."

Mrs. W. B. W.

NOTE—These wholly unsolicited letters and all others quoted are used with the explicit permission of the writers. —R. B. W.

Right—

An Olympic Hybrid  
Special Select  
(see page 8)

General Index

Amaryllis .....26, 48  
 Books about Lilies .....39, 43  
 Clematis ..... 44  
 Colchicine Experiment Kit ... 46  
 Cultural Directions ..... 38  
 Cyclamen ..... 42  
 Eremurus ..... 45  
 Erythronium ..... 46  
 Fritillaria ..... 46  
 Garden Club Special ..... 14  
 Lilies—complete index of all. 47  
 Lily Food ..... 11  
 Lily Spray ..... 38  
 Lily Seed ..... 39  
 Lily Society ..... 34  
 Spider Lily .....31, 48  
 Special Delivery ..... 43  
 Special Handling ..... 43  
 Success with Lilies ..... 43  
 Three Way Guarantee ..... 7  
 Trowel ..... 39  
 Wire Planting Baskets ..... 46  
 When to Plant Lilies ..... 18  
 When to Order ..... 31

Complete Lily  
Index

On page 47 you will find all lilies indexed for quick reference.

"And I beseech you, forget not to inform yourself diligently as may be, in things that belong to gardening."  
—JOHN EVELYN

FOLLOWED INSTRUCTIONS IN "SUCCESS WITH LILIES"—DELIGHTED AND AMAZED WITH THE RESULTS

From Springfield, Tennessee

"Here is my lily order for this year. I had never been able to grow lilies very well until since I have been buying bulbs (about five years) from you and read your book "Success with Lilies." I prepared my beds and planted according to your instructions. In the spring, I feed them with your special Lily Food, spray with MICROCO. In the fall, when they are dormant, I cover with compost and I'm delighted and amazed at the results. My Olympic Hybrids and Aurelians are seven feet tall with as many as thirty blooms per stalk. I have lilies to enjoy in the garden, for arranging and to give to my friends. It is the most beautiful and fascinating hobby I can think of, thanks to your good bulbs and simple instructions on how to grow them. I'm telling all my garden friends about your bulbs."

"I'm looking forward to another exciting lily year."

Mrs. E. A. B.



"Most radiant, exquisite  
and unmatched beauty."  
—Shakespeare

# DeGraaff

## Exotic Beauty



ABOVE —  
"HEARTS DESIRE"  
STRAIN



BELOW — AURELIAN  
"SUNBURST" STRAIN



**AURELIAN "Hearts Desire" Strain**—151—Large, shallow, widely-flared bowl-shaped lilies in shades of white, cream and yellow-orange. They are a grand lot with highly colored throats and tinted petal tips. You will love them not only for their grand effects in the garden but because they are vigorous and healthy, long lived and very free flowering. Always plant in clumps of at least three of a kind about a foot apart. Sold in mixed colors only. August flowering. Heights 4 to 6 feet. PD 6 inches.

3 for \$4.50, each \$1.75, Doz. \$17.75

**AURELIAN "Sunburst" Strain**—150—These are reflexed and semi-reflexed as their picture indicates. They are big lilies, some with an eight inch spread and established plants carry up to two dozen gorgeous blooms. For ornamental garden effects, they are hard to beat. Colors vary from ivory-white through all shades of yellow to apricot and almost orange. You'll find them vigorous, healthy and long-lived; as cut flowers, they are ideal. Like all other lilies, plant in clumps of at least three for stunning garden pictures. Late July into August. (PD) 6 inches. Heights 4 to 6 feet.

3 for \$3.75, each \$1.35, Doz. \$14.95

### Special No. 34-L

Here's a special value on the five gorgeous DeGraaff lilies pictured on these two pages. We'll send you three bulbs of Sunburst and two each of the other four varieties, fresh dug and postpaid in October

**\$13.95**

**YOU SAVE \$2.90**

# Hybrid Lilies

SEE FRONT COVER  
FOR LARGE PICTURE  
OF GOLDEN SPLENDOR

## for the Golden Age of Gardening

De Graaff Aurelian Hybrids are among the finest of the vast array of new lilies. Not only are they beautiful, but their performance under average conditions is exceptionally good. Given reasonably good soil and planted according to the simple directions given in the back of this catalog, they will thrive and multiply year after year. They can make your garden outstanding indeed, easily the envy of your friends and neighbors.

**AURELIAN "Golden Splendor" Strain-169**—At last I'm able to offer this outstanding strain of golden trumpets. They are selections from DeGraaff's famous hybrids to my exclusive specifications, selections made in the fields at blooming time and marked just for us. The large picture on the cover is approximately natural size when established. Colors vary somewhat from lemon and butter-cup yellow to rich glowing gold. Words fail in describing their spectacular garden perfection. And best of all, they are vigorous and healthy, long-lived under average conditions. Heights vary from four to seven feet and they are happy either in full sun or light shade. Planting depth 6 inches. July-August flowering. We'll have a reasonable supply but early orders are advisable.  
3 for \$5.50, each \$1.95, Doz. \$21.75

**DESTINY-895**—A superb upright-flowered lily, truly a worthy addition to the famous Mid-Century Hybrids. Destiny has open chalice-shaped flowers of a brilliant canary yellow with just enough large brown spots in the center to make a welcome contrast, to make the harmony perfect. A stem from an established bulb will have up to ten well shaped flowers beautifully carried above lustrous dark green foliage on stems three to four feet tall. July. PD 5 in.

3 for \$3.65, each \$1.35, Doz. \$14.50

BELOW — MID-CENTURY "DESTINY"



GOLDEN SPLENDOR

**DR. ABEL-246**—Here's a fine red lily named for the late Dr. Abel of White Plains, N. Y. The good doctor was a keen amateur gardener who loved lilies and raised numerous seedlings which later became the famous Fiesta Hybrids. They are a vigorous strain, highly disease resistant and will grow everywhere. The blooms are pendant reflexed or recurved type and freely produced on strong, wiry four to six foot stems. Dr. Abel is a selection from the Fiestas, a vivid deep red, thickly speckled with maroon-black and makes a stunning display in the garden. It stands up well in full sun and received an Award of Merit from the Massachusetts Horticultural Society. Like all other lilies, it makes the best display if planted in clumps of at least three bulbs. July blooming. PD 5 inches. You'll find it foolproof and a good performer under all conditions.  
3 for \$3.95, each \$1.45, Doz. \$15.50

RIGHT —  
FIESTA  
"DR. ABEL"





BROWNII — AN ENORMOUS TRUMPET LILY

**BROWNII**—183—Considered one of the most beautiful of all the trumpet lilies but very scarce. A huge bloom, sulphur-yellow, aging white, exterior glossy purple. An easy garden lily in either light or heavy soil but insists on perfect drainage. Deep chocolate-brown anthers are striking against the sulphur of the freshly opened blooms. Equally good in full sun or part shade. June-July. Ht. 3 to 4 ft. PD 6 in. 3 for \$16.50, each \$5.75

**BRANDYWINE**—179—This new lily has large heads of outward-facing flowers beautifully held on three to four-foot stems. According to the color chart it is ornament-orange dotted with ox-blood-red. The blooms are of good substance and fine for cutting. Mid-June flowering. 3 for \$9.95, each \$3.50

**AMABILE**—125—A very pretty Turk's Cap Lily, grenadine red with tiny black spots, free flowering and all around healthy. Ideal for the middle or front of the hardy border where it adds a splash of airy brilliance. Late June. Heights 1½ to 3 feet. PD 4 inches. Full sun or part shade. 3 for \$1.55, each 60c, Doz. \$5.95

**AMABILE Luteum**—126—A sport from the lacquer-red Amabile, a native of Korea, identical in form and culture. Luteum flowers a few days later than the red form and is especially good against dark green foliage. It is one of the loveliest of the smaller yellow lilies and less costly than others of the color. The bulbs are small but flower well in late June. Height 1½ to 3 feet. It thrives in sun or part shade. PD 4 inches. 3 for \$3.30, each \$1.25

**CHALCEDONICUM**—215—We are happy to again be able to offer this brilliant and famous lily, The Red Martagon of Constantinople, one of the oldest lilies in cultivation, having been introduced during the reign of Queen Elizabeth I. This is a beautiful lily from Greece, a gorgeous, waxy, Turk's Cap Lily, unspotted and nodding, whose intense scarlet blooms rival all others of the color. Seems to prefer a heavy but well drained loam, well filled with humus, full sun or partial shade. Generally requires a season to become established. July blooming. Ht. 3 to 4 ft. PD 3 inches. 3 for \$16.50, each \$5.75

**CONCOLOR Racemosa**—221—An improved form produced in Canada by Mr. Skinner. The stems are taller, two to three feet, and very vigorous with 18 to 26 blooms each. Flowers larger than the type, a brilliant sealing wax red. 3 for \$3.30, each \$1.25

**CHEROKEE**—217—Good red lilies are always scarce and this is a good one, a brilliant brick-red dotted maroon, outfacing and slightly upwards. Blooms freely produced on strong 4 to 5 foot stems. A clump of three in the hardy border will make a stunning effect. Late July into August blooming. PD 5 inches. 3 for \$6.75, each \$2.50

plant  
for carefree  
modern gardening  
ACCENT with  
*Lilies*

IF YOU THINK LILIES  
MAY BE DIFFICULT

*From Maryland*

*"But this year, without servants, my little garden had to look after itself to a large extent and I found out the value of lilies."*

*Mrs. L. N. L.*

*Boulder, Colo.*

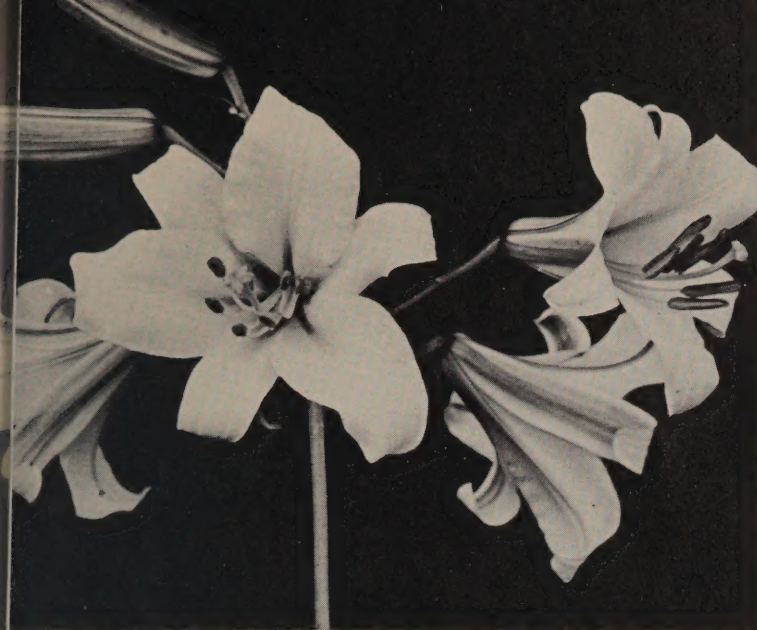
*"I feel sure there are great possibilities for lilies in this section but very few people seem to grow them. Some of my Cascade Candidums have up to five stalks per bulb with as many as fifteen blossoms to a stalk. And my lilies require the least care of any plant in my garden."*

*Mrs. W. R.*

**CORAL Hybrids**—366—A strain of hybrids produced by crossing the species Maximowiczii and the fine upright species Dauricum Willsoni. There is considerable variation in color but in main they are a coral with some apricot shades. They are medium to large, semi-recurved to semi-upright in form with flowering period ranging from late June into August. We believe you will like them. Ht. 3 to 5 ft. PD 4 in. 3 for \$3.00, each \$1.15, Doz. \$11.75

CORAL HYBRIDS — CHINESE CORAL





CROW'S HYBRID—AN OUTSTANDING WHITE

**CROWS HYBRID**—230—Selected seedlings from a magnificent strain produced by crossing Regale and Sulphureum. They are huge white trumpets with greenish throats and brown to green exteriors. Continued breeding has produced yellow and ivory forms as well as light pinks (none of the latter are yet available). Established plants carry up to 30 huge blooms on 5 to 6 foot stems, opening a week to ten days after the Regales are over. PD 6 in.

3 for \$4.45, each \$1.65, Doz. \$16.75

**CERNUUM**—218—Here's a rosy-lilac lily as easy as the popular Tenuifolium and similar in flower. The tightly recurved blooms are spotted wine-purple, pleasingly fragrant and all together charming. A rare lily long almost unobtainable. Mid-July. Ht. 1 to 3 ft. Full sun, not particular as to soil. PD 3 inches.

3 for \$5.50, each \$2.00, Doz. \$21.00

**CYRUS GATES**—235—One of the most brilliant of the Bellingham Hybrids but always VERY scarce. We have not been able to list it since 1949. Seldom do we have enough to fill all orders. It is a vigorous grower but slow to propagate. The blooms, twelve to twenty per stem are true Martagon type, cadmium-orange, spotted purple-black, a stunning lily. Ht. 5 to 7 ft. July. PD 6 inches.

3 for \$6.25, each \$2.25

**CANADENSE Flavum**—191—One of the best loved of our native lilies, graceful and long lived. Its nodding, bell-shaped blooms are a lovely clear yellow spotted chocolate. Give it a sunny spot with ample moisture and a soil well filled with humus. An ideal lily for naturalizing in moist woodland. June. 4 to 5 ft. PD 4 in.

3 for \$1.85, each 75c, Doz. \$7.35

**CAVALIER**—219—This showy garden lily is persimmon-orange, upright in form with flowers carried in an umbellate head on three-foot stems. Flowers dotted oxblood-red at the center and flowering in mid-June. These Beltsville hybrids are a vigorous, rugged lot, flowering freely over a long period. Valuable for planting in tubs or cutting. The blooms have excellent substance and these lilies have proven themselves in all parts of the country without pampering.

3 for \$9.95, each \$3.50

**GOLD FLAKE**—352—A 1954 introduction of exceptional merit. It is a large, flat opening bloom, semi-upright on 2 to 3 foot stems, golden yellow with mahogany spots. A very showy plant not only in the garden but for flower arrangements. Good in full sun or part shade. Mid June. PD 5 inches.

3 for \$10.95, each \$3.95

## LILY INDEX

Because it was not practical to arrange all the lily varieties we offer in alphabetical sequence, we have included a complete index on page 47 for ready reference.

## Our Three-way Guarantee

See back of Order Blank for our Three Way Guarantee to replace any bulb at half price that fails to grow for any reason whatsoever. We offer only the very best bulbs and we stand back of them.

### "BREATH TAKING PERFORMANCE"

Lincoln, Nebraska

*"I wish to take this opportunity to tell you how delighted I am with the bulbs you shipped me last fall. Have always been so pleased with your bulbs I have received the last few years and their performance has been breath taking. But the bulbs I received last fall surpass all I have ever ordered and am so very pleased, looking forward to another wonderful lily season. Thank you for the wonderful bulbs."*

Mrs. E. C. W.

### CALIFORNIA NURSERYMAN ADVISES ORDERING DIRECT FROM OREGON

Sacramento, Calif.

*"The lilies we got from last year were even more beautiful than we expected. The blooms were gorgeous and some of them grew seven feet tall. Lilies here in this valley are not as well known and the average home owner doesn't seem to know how to grow them. Our favorite nurseryman advised us to order our bulbs direct from Oregon as we were going to do anyhow. We are so enthusiastic about our lilies that it is hard to keep from getting more bulbs than we have space for."*

Mrs. L. T. W.



## Why order from Oregon?

Because when you order direct from where the bulbs are grown, you get fresh dug bulbs RUSHED to you at the peak of their perfection. They have not laid around a store counter or been pawed over by other customers. All our bulbs are fresh dug and shipped at once. You can see the difference.



OLYMPIC HYBRIDS

This is the famous Olympic Hybrid developed by Mr. Jan DeGraaff, and year by year they have been improved by selecting only the finest from hundreds of thousands for seed parents.

## Olympic Special Selects

Among discriminating gardeners, these "selects" find ready welcome. They are chosen while in flower, the cream of acres and acres of fine lilies. In form they vary—some are large formal waxy-white trumpet with unusual substance and vigor and exhibiting ideal placement—some are large flaring open bowl shaped with brownish or light greenish exteriors—others are very large irregular forms with longer petals slightly twisted or ruffled—all are graceful and altogether desirable. The field selection of these unusual bulbs demands careful painstaking work and skilled judgment. These "Selects" are offered as a special group and though they cost more due to the added expense of checking and digging separately, they are more than worth it. In the border you will find them outstanding, spectacularly so. Culture same as for No. 212.

**OLYMPIC Hybrid, "Special Selects"—213**—Every plant in this lot is of exhibition quality, outstanding in every respect, the choicest and finest "selects" from acres of trumpet lilies. These are for gardeners who want only the best and though they cost somewhat more, they are worth it. Culture same as for No. 212.

Flowering . . . . . 3 for \$4.75, each \$1.75, Doz. \$18.85

# Olympic Hybrids

Formerly Listed as Centifoliums

Produced by Jan De Graaff

If Mr. De Graaff's lily hybridizing had given us none but this grand variety, his fame would be secure. You'll want these Olympic Hybrids in your collection no matter how many others you have. They are among the earlier hybrids he produced but year by year through rigid, painstaking selection, their present perfection has been achieved. The huge wide-flaring trumpets are generally white inside with exteriors greenish-brown or soft wine-red, sometimes white or greenish-white. The sturdy stems reach four to six feet, carrying their many huge blooms beautifully. They thrive in full sun but in partial shade the flowers last longer. July flowering after the Regales and continuing three weeks to a month.

This unusually vigorous, healthy and free-flowering lily should be planted in groups of three to a dozen or more, a foot to eighteen inches apart, six inches deep. A group of 25 makes a never-to-be-forgotten picture. See special prices in lots of 25.

Olympics are perfectly hardy to cold but, like the famous Regals, should be lightly mulched to somewhat hold back spring growth and danger of being nipped by late frosts. **Always plant in clumps of three, six or more when possible.**

### OLYMPIC Hybrids—212—

	3	1	12	25	100
Flowering	\$1.10	\$.50	\$ 4.25	\$ 8.25	\$ 32.50
Large . . . .	2.45	.90	9.75	18.95	74.50
Extra large	3.65	1.35	14.25	27.95	110.00

## See Page 3 . . .

See the picture of a single flower of Olympic Special Select as grown on a young plant. These especially selected forms are simply superb. Note the letter below.

### "OLYMPIC SPECIAL SELECTS ARE THE FINEST OF ALL"

From Nebraska

*"The most outstanding of all the many kinds of lilies we have bought from you is the Olympic Special Selects. One is six feet tall with 13 huge blooms, creamy white with the yellow of the throat extending clear out to the edges of the petals and spilling over the edges. Others are wide open with the pink of the ribs showing through the petals. Still others are the coolest green that I have ever dared imagine. If I could have but one variety, the Olympic Special Selects would be it."*

*"All our lilies have stood the severe winters and the hot summers but they have thrived beyond expectations."*

Mr. J. S.





# Auratum Lilies

*"Auratum lilies grew long years ago  
Upon the slopes of Fujiyama, old,  
'Twas there, the Sun God kissed them tenderly,  
And gave to them, their shining bands of gold."  
—Harriet G. Willhide*

## Auratum Platyphyllum Special No. 8-L

Here's a bargain in bulbs a bit smaller than flowering size but most will bloom the first year. And remember, as a rule small bulbs establish themselves quicker than large ones. Please don't confuse these small bulbs of this very popular and wanted lily with the cheap imports frequently offered—they are Oregon grown, fresh dug, available **ONLY** in the fall. All Auratums should be planted in the fall only, **NEVER** in the spring from cold storage. See full description below. And **PLEASE**, no orders for less than three bulbs.

Special No. 8-L... 3 for \$2.65, 6 for \$4.95, 12 for \$9.85  
Note: Please send your order as early as possible for these.

**AURATUM Platyphyllum**—139—Unquestionably the finest of all Auratums, a massive form, hardier, healthy and long lived. Mr. Kline has specialized on this for many years and the stock is exceptionally fine. Blooms are huge, often a foot and more in diameter. Its leaves are more numerous and broader. Upper petals, frequently somewhat pendant, give the blooms a delightful hooded look. Platyphyllum is not quite as spotted as the type. All in all it is outstanding. If you buy but one Auratum, this should be earnestly considered. Like the rest, it prefers partial shade, ample humus and good drainage. August-September. Ht. 4 to 7 ft. PD 5 inches.

Flowering ..... 3 for \$4.05, each \$1.50, Doz. \$16.40  
Large ..... 3 for \$5.30, each \$1.95, Doz. \$20.95  
Extra Large ..... 3 for \$6.95, each \$2.50, Doz. \$27.65

**AURATUM Platyphyllum Rubrum**—142—The whole ray and the center of the bloom is rich crimson on a pure white ground. Spots are relatively few. **Each \$10.00**

**AURATUM Platyphyllum Rubro-Vitatum** —141— A very showy crimson-rayed form with a beautiful golden center. One of the rarest. **Each \$10.00**

**AURATUM Tri-Color**—133—Imagine if you can an Auratum without the crimson spots. Tri-Color is just this, it is similar to the famous Platyphyllum, has the gold band but instead of crimson, the spots are light yellow. It is strikingly beautiful but very scarce and rare. You will love its unusual effect.

Flowering..... 3 for \$14.25, each \$4.95

**AURATUM Late Form**—131—Except for season of bloom, this is the same as No. 130, Auratum Type. However it opens flowers as the others are through. In sections where mild weather lasts till late in the fall, it keeps flowering well into late September and sometimes into October. You'll welcome them for late bloom. Culture same as for Type. 3 for \$5.30, each \$1.90, Doz. \$20.95

**AURATUM Praecox**—137—These were developed from chance seedlings found in the wilds. They start flowering about ten days ahead of the Type and lengthen the season of these gorgeous flowers. 3 for \$5.30, each \$1.95, Doz. \$20.95

**AURATUM Pictum**—136—This is a selected form of this superb lily, brilliant and richly colored, a veritable jewel. The huge bowl-shaped blooms, white, heavily spotted crimson, with tips of petals flushed pink to crimson, make it one of the most glamorous and outstanding highlights of the hardy garden. Only when you see it in your own garden can you appreciate its inimitable beauty. Culture same as for Type. 3 for \$16.50, each \$5.75



AURATUM

**AURATUM**—130—This is the regular or "type" Auratum beloved by all flower lovers. The blooms are very large to huge, open bowl-shaped, waxy-white, spotted crimson and each segment striped with a gold band. All in all, it's an exquisite lily, easily the crowning glory of any garden. Pictures but poorly portray its perfection. Height 4 to 7 feet. PD, planting depth, 5 in. Every bulb Oregon Grown, fresh dug. August flowering.

Flowering..... 3 for \$3.25, each \$1.25, Doz. \$12.75  
Large..... 3 for \$5.00, each \$1.85, Doz. \$19.90

## Believe It or Not!

This Auratum has flowered regularly for the last nine years. It's growing in poor uncultivated soil, heavily infested with tree roots, and has never even been weeded. This is in a garden near Sandwich, N. H. at the country home of a Boston customer, evidently a chance seedling. Withstanding summer heat and zero winters, year after year, it produces up to a dozen perfect blooms. Can you beat this?

## Auratum Special No. 14-L

EIGHT WEEKS OF  
AURATUM BLOOM

From mid-July till September or later, into October here in Oregon. Get early Praecox (137), mid-season Platyphyllum and the late form (131), each packed separately, flowering size.

One each, 3 bulbs  
**\$4.95**

3 each  
**\$14.65**



"A flower will often reclaim a mood  
when nothing else will bring it back."  
—Calthrop.

## Lilies for Cutting

Which lilies for cutting? Why, any of them BUT don't cut with long stems. Just cut the blooms. If you cut with long stems, you weaken and handicap the bulb. The bulb needs the leaves to aid in growing next year's bulb. But the blooms may be cut, all of them if you wish. Note the arrangements on these pages. Lilies are ideal for unusual effects. Just try them.



FORMOSANUM — PURE WHITE — VERY LATE

**PUMILUM—830**—Formerly listed as *leuifolium* - The Coral Lily. The gayest of the "little lilies," bringing into our gardens in late May and early June, a most welcome degree of joy and gladness. The slender, wiry stems 1½ to 2 feet tall hold aloft their many dainty Turk's Cap blooms of light scarlet. The tiny bulbs are easy to grow, producing plants out of all proportion to their size. Demands full sun and well-drained soil. PD 3 inches. Flowering . . . . . 3 for 80c, Doz. \$3.00, 25 for \$5.85

**PUMILUM Golden Gleam—834**—This is an apricot-orange colored form of the above, quite distinct and different from the coral-red of No. 830. Both forms are attractive, both should be in every garden. They are so inexpensive that you can afford to plant them by the dozen. These low-growing lilies have a place in the front of your border planted in groups of three or more. Heights, planting depth (PD), and culture the same as No. 830. 3 for \$1.85, each 95c, Doz. \$7.25

**PUMILUM Red Star—838**—A variation from the type above but a truly delightful break. We offered it in 1946 but it has not been available again until now. It's a glowing scarlet, outward-facing, rather starry flower, with irregularly arranged and less reflexed petals than the type above. It grows up to two feet tall with broader petals and all in all is very worth while. I know you will like it much. PD 3 inches. Late May and early June. Full sun. 3 for \$2.75, each \$1.00, Doz. \$10.50

**SARGENTIAE Hybrids—757**—These are seedlings of the species *Sargentiae* so there is some variation in them. We know of no stock of the true species which is free from disease and therefore do not offer it. These seedlings are a magnificent group, flowering late July into August. They have large trumpets, reddish-brown outside, creamy-white inside with a golden throat. Ht. 4 to 5 ft. PD 6 inches. 3 for \$6.95, each \$2.50, Doz. \$27.95

REGALES IN GARDEN OF DR. E. H. WILSON



### A Very Late, Long Flowering Lily

**FORMOSANUM Late, Pure White—318**—This is a new form, quite different in that the entire flower is pure white, inside and out. Too, it is far more vigorous than the older No. 316 and seems to be much longer lived. This is not a seedling but a new clonal strain. It starts flowering in September and keeps it up until late fall unless cut down by frost. Where fall is long and mild as in this part of Oregon, this late form usually flowers well into December. For cutting it is very fine, a real beauty. I'm sure you will find it most desirable. The bulbs are not large but they produce heavy stems with many stem roots and a huge number of blooms. A bulb an inch in diameter will send up a full size flower stalk. Succeeds in average soils. If late summer and fall are dry, don't overlook watering. PD 5 in. Prefers full sun.

Flowering size . . . . . 3 for \$1.65, each 60c, Doz. \$5.95  
Large . . . . . 3 for \$2.35, each 95c, Doz. \$8.95

**SPECIAL FOR MASS PLANTING AND CUTTING!**

**25 flowering size bulbs, postpaid . . . . . \$10.95**

HELP US  
AND YOURSELF  
ORDER  
EARLY

**FORMOSANUM Early variety—317**—Known as Price's variety. It blooms July into August with stems generally about a foot tall. The blooms are not quite as big as the late variety. Ideal in the rock garden or foreground of the hardy border. Surrounded by summer flowers, it is delightful. PD 5 inches.

3 for \$2.35, each 90c, Doz. \$9.25

**GRAND CANYON Hybrids—362**—A blend of gorgeous colors found in the canyon walls. Red, light and dark, in many shades predominate along with colors usually associated with fine oriental rugs; deep gold, rich orange, a few rusty golds and yellows. Named selections from this strain include such fine lilies as Valiant, Red Bird, Viking, Cherokee and others. They are mostly wide open, outfacing and semi-upright forms, seldom recurved. A vigorous healthy group developed by Dr. Palmer, famous for his work with Glads. Offered in mixture only. Ht. 3 to 6 ft. July to August. PD 6 in.

3 for \$3.15, each \$1.20, Doz. \$12.35

Left . . .

Dr. E. H. (Chinese) Wilson, the discoverer of the Regale Lily, gave me this photograph taken outside his library window. I visited him at his home and at the Arnold Arboretum in 1933. Please turn to page 17 for our offering of this wonderful lily and also the new Golden Regal.

Charming  
IS THE WORD FOR  
*Lilies*

The Most Talked-About Flower  
in the  
NEW GOLDEN AGE  
OF GARDENING

**AURELIAN "Sunburst" Selected Yellows-150-Y**-This is a selection from the Sunburst Strain offered in mixture on page 4. So many have asked if they could order yellow Sunburst that we have now arranged to have the best yellows in the group tagged while in flower and dug separately. This is a lot of extra work and they cost a bit more but they are a glorious lot if you want fine yellows, here they are. Planting depth (PD), flowering period and heights the same as other Aurelians. You'll love them.

3 for \$5.00, each \$2.25, Doz. \$19.00

**AURELIAN "Limelight" Strain-146**-Here we offer a strain that includes all types of these grand lilies, trumpets, reflexed, semi-trumpets and bowl-shaped flowers. Colors range from all shades of yellow to ivory and cream, pastels, a few whites and many bi-colors. Many have highly colored exteriors making very colorful buds and highly colored throats are widespread in the lot. We offer them only in mixture but all of them are good growers, healthy an vigorous, a grand selection of top quality Aurelian seedlings. Heights 4 to 7 feet. Late July into August. PD 6 inches.

3 for \$5.00, each \$2.00, Doz. \$19.00



AURELIAN HYBRID  
"LIMELIGHT"  
STRAIN

New **Life** for Tired Gardens  
with  
**Ware's Lily Food**

Lily lovers have long been wanting a practical and safe source of food elements for their beloved bulbs. They have been warned not to use this or that but until now, no food especially for lilies has been available.

With cooperation of U.S.D.A. Extension experts and pathologists, a truly comprehensive lily feeding program has been worked out. It is believed it will fill your long felt want. This food is planned to supply the nourishment frequently lacking in many garden soils. It may be used with a minimum of effort and without danger of over-stimulation.

Ware's Lily Food, concentrated and completely soluble in water, is applied as a dilute liquid in repeated doses. A couple of pounds will take care of a hundred lilies for a season or more. Complete directions for the feeding program are in each package.

This feeding program can be started either at planting time or during the growing season. Ware's Lily Food is put up in two and five pound packages. Directions are supplied for using small or large quantities with practical household measurements, teaspoonfuls, or cup, being used. Shipped POSTPAID.

Two lb. Trial Package, POSTPAID **\$2<sup>25</sup>**      Five lb. Economy Package, POSTPAID **\$4<sup>95</sup>**

"YOUR LILY FOOD RESPONSIBLE"

Dallas, Texas.

*"Never have we had so much lily bloom as from your bulbs bought the last three years. They were simply beautiful, just breathtaking. as high as forty blossoms per plant. And I truly believe your Lily Food was very much responsible. I fed them regularly last summer, following your instructions to the letter and then added the bone-meal in the fall."*

Mrs. A. B.

**Trumpet Lily Special No. 11-L**

Trumpet Lilies are by far the most popular of all lily types and among them we find many very beautiful kinds. Among them are varieties flowering throughout the entire season from early summer until late fall. Some of them are short trumpets such as Golden Splendor on the front cover, others are long like the Formosanum pictured on page 10. All are beautiful. In this special collection we offer you one bulb each of seven different kinds, flowering from June until October and even later where falls are long. Included are Marble Temple, Golden Splendor, Shellrose, Sargentiae, Pink Aurelian, Jade Temple and Formosanum, seven beautiful varieties, every one different. We'll ship one each packaged separately, a catalog value of nearly **\$11.95**

\$15.00 for.....

**YOU SAVE ALMOST \$3.00**

*"Little white Lily,  
Drest like a bride;  
Shining with whiteness  
And crowned besides."*

—GEORGE MACDONALD

## In love with Lilies?

Many write us

*“Why haven't I discovered your lilies before this?”*



PROSPERITY

**PROSPERITY-901**—This is a DeGraaff Mid-Century Hybrid, but it is an entirely new color break. It is a lovely, cool, lemon-yellow — an outstanding superior lily in every way. The outward facing blooms are beautifully held on strong, wiry four to five-foot stems. This fine colored lily will be most welcome and will prove a sensational garden plant for years to come. It is a sturdy, vigorous lily and every bulb soon establishes itself and forms a nice clump with numerous flower stalks, making a stunning show in the garden. A July bloomer. PD 5 inches.

3 for \$4.25, each \$1.55, Doz. \$16.75

RED FORTUNE



**Jillian Wallace**—new and rare

This is the wonder lily of the age. Customer after customer who bought this lily previous to last year write us that it is far more beautiful and much larger than their wildest dreams imagined it to be.

**JILLIAN WALLACE-405**—Our picture of this spectacularly beautiful lily falls miserably short of portraying its absolute perfection. It seems impossible to reproduce its velvet-like crimson color. According to the official color chart it is *Chrysanthemum Crimson* but only when you see it in your own garden can you fully appreciate its exquisite beauty. We have observed it intimately for some years now and still marvel at its superior quality and dazzling richness.

Jillian Wallace was produced in Australia but is now growing in quantity in Oregon. Its habit of starting growth quite late in the spring is most valuable in avoiding damage by late frosts. Established plants grow five to six feet tall, bearing up to a dozen blooms eight inches or more in size, beautifully held, almost flat opening. Its beauty is beyond imagination but once you see it you'll never be satisfied until it's growing in your own garden. Mid-August to September flowering. PD 5 inches. Sun or part shade, the latter preferred.

Flowering size.....3 for \$14.95, each \$5.00  
Large.....3 for \$25.00, each \$9.00

## Report from Minnesota

*This gardener ordered three small bulbs of Jillian Wallace and scaled them nearly to the heart for propagating. However, all three grew and two stems bore two blooms each and this in spite of a very severe winter.*

Mrs. W. A. R.

**RED FORTUNE-691**—A 1956 introduction. I've watched this new lily for several years and more and more I'm impressed with its quality. It's an upright lily, vigorous and free-flowering. One of the early lilies, flowering out here in the first part of June. According to the color chart it is currant-red with the lower part of the petals dotted darker red. Even the anthers are red. All in all it is a red lily you will find most pleasing in your border. It holds its large blooms on 2½ to 3-foot stems. PD 5 inches. Full sun or light shade.  
3 for \$12.00, each \$4.25

*Cherish the faith that  
... "In paradise a garden lies."*

## By DeGraaff 1956—

**SUNSTAR—795**—You who have loved the lily Enchantment by Mr. DeGraaff for its brilliance will welcome this new lily which is even more colorful. Sunstar is as large as Enchantment but is carried in a flatter umbel, the individual flowers having a flattish cup shape. However, its ultra brilliance is its crowning grace. Dazzling brilliant vermilion-red, almost unbelievably free-flowering and ability to withstand the hottest sun without damage, mark this lily for tremendous popularity. It is new and still quite scarce but most worth while. From three to four feet tall, on slender stems, these star-like flowers may well be the highlight of your garden. Truly it's an exquisite novelty. Full sun, PD 5 inches.

3 for \$14.50, each \$5.00

*Below:*

## A 1957 Introduction by Kline

**CAMEO Hybrids—237**—Here's a new hybrid of exquisite beauty, an Auratum x Japonicum cross in shades of pink to light blush. Sometimes it shows a few rose color flecks or dots in the throat though many are self colors. A faint golden band shows in most flowers. I've observed this in the fields for the past seven years and each year looked forward to when it could be introduced. Truly it is a jewel of the first water with a delightful fragrance similar to Japonicum. Mid-July. PD 5 inches. Heights 2 to 3 feet. Supply limited.....each \$7.95

CAMEO HYBRIDS



TEMPLE HYBRIDS

## Temple Hybrids produced by John Shaver

These are an outstanding lot of trumpet lily hybrids, the result of many years painstaking selections and re-selection by Mr. Shaver. You'll find them most entrancing. They get their name, Temple Hybrids, for the exquisite colors on their exteriors and in their throats. Marble Temples are mostly white, ivory or pearly-white with exteriors bronze, yellow, green, brownish-purple or veined. Sold in mixture only.

### MARBLE TEMPLE Hybrids—912

Flowering... 3 for \$1.85, each \$.75, Doz. \$ 7.35, 25 for \$14.50  
Large... 3 for 2.35, each .90, Doz. 9.25, 25 for 18.25  
Jumbo... 3 for 3.35, each 1.25, Doz. 12.95, 25 for 25.00

**JADE TEMPLE Hybrids—911**—Here are pale misty greens and greenish-whites. Throats are greenish-yellow and greenish-white. Exteriors are mostly brown or green. Anthers are varying shades of yellow and brown. Ht. 3 to 6 ft. July-August.

Flowering ..... 3 for \$4.75, each \$1.75, Doz. \$18.00  
Large ..... 3 for 7.75, each 2.75, Doz. 30.00

**AMETHYST TEMPLE Hybrids—910**—With the exception of color, similar to the other Temple groups. No. 910 varies from light amethyst-pink to deeper shades nearing columbine-red. The pink stain is on the interior as well as the reverse part of the petals. These lilies are especially delightful in floral arrangements as well as making the spotlight in the hardy garden. In warm sections plant in partial shade to avoid bleaching. Keep the soil reasonably moist at all times and mulch to keep it cool. These precautions will insure your blooms lasting much longer and retaining their exquisite coloring until the flowering period is complete. July. Ht. 5 to 7 ft.

3 for \$13.95, each \$4.75

**SUN TEMPLE—913**—This is the famous strain which won two blue ribbons and the Directors Cup at the Seattle show in 1954, under auspices of the North American Lily Society. Its clear brilliant color varying from clean light yellow to warm golden yellow make Sun Temple outstanding. Occasionally the yellow exteriors are streaked with green, olive or wine shades. Vigorous, tall stems and ample foliage distinguish these as they do all the Temple hybrids. You will find them a "must" in better gardens everywhere. Ht. 4 to 7 ft.

3 for \$13.95, each \$4.75

## SPECIAL! Liberal Savings for Garden Clubs

Each year more and more garden clubs are taking up the subject of lilies, many making a project of them. Club secretaries write us, asking if we make special offers to clubs. So many write that answering the letters has become almost a burden.

I wish it were possible to offer a fixed discount to garden clubs on any and all items in our catalog, but that is not possible. Special prices have to be tied to volume sales and volume packing to warrant them in these days of high costs of doing business. My suggestion is that I make up a special collection of desirable lilies, one to three bulbs of a kind, and offer them at a substantial savings just to garden club members in lots of five or more collections. **TO ONE ADDRESS.** They will be sent postpaid and each collection will be packed in a separate carton for easy distribution. Each variety of bulbs will be packed separately in cellophane with planting directions. All bulbs will be sent in early October as soon as they are dug. Just as soon as we receive the order we will send copies of our 1957 catalog to be distributed to each one who will receive a collection. From these catalogs the recipient can learn just how to prepare the soil and be ready to plant when the bulbs arrive. In addition to the catalogs, to every Garden Club ordering five or more collections, we will send a copy of our book "Success with Lilies" to place in their library where all members can refer to it. Below I'm listing the lilies that will make up the collection. Every variety has been thoroughly proven all over the country. All are vigorous, sturdy lilies highly resistant to disease and we know they will give good satisfaction.

### Garden Club Special 3-L

Here's the list of the six suggested varieties with the page in the '57 catalog where described. Included is one bulb of Aurelian Moonlight Hybrid (page 33), two of Speciosum White Pearl (37), two of Dauricum, tall late form (29), and three each of Marble Temple (13), Sunset (33) and Fiesta Hybrid (22). Six different varieties, fourteen bulbs in all in a wide selection of types and blooming early to late. Orders must be for a minimum of five or more collections to one address and must be sent, accompanied by remittance before October 1, 1957. These collections will be sent postpaid, five for \$39.85, that's \$7.85 each. At catalog prices, each would cost \$11.85. That's a \$4.00 saving on each one, total saving \$20.00, over one-third.

*Good lily bulbs . . . planted right . . . insure garden beauty far beyond their cost . . .*

## Preston's Hybrids

**CORSAIR-227**—One of the popular new upright type lilies, candelabrum effect, a stunning garden picture. 12 to 15 blooms on sturdy 2 to 3 foot stems, apricot-yellow, flushed with red. 3 for \$7.75, each \$2.75

**SOVEREIGN-772**—Here's a grand addition to our all too few good yellows. It is a rich brilliant yellow with a few faint spots. The medium height sturdy stems carry up to twenty somewhat pendant recurved large blooms of good substance. This is one of the best of the newer introductions. Each \$3.50

**TYPHOON-852**—A different upright with the spectacular flame-scarlet blooms clustered at the top of the 2 to 3 foot stems. Use it toward the front of the border. A long lived lily. 3 for \$7.75, each \$2.75

### Preston's Hybrids Mixed

For mass color in the border few other groups can equal these brilliant hybrids. They are all raised from seed, a vigorous healthy lot similar in type to the named varieties on this page. Colors range through shades of red, orange, yellow and gold, truly a gorgeous array. Culture as for named varieties. Heights 3 to 5 feet. PD 6 inches. July. Plant them in groups of six or a dozen or more for beautiful effects. No. 624.

**3 for \$1.95, each 75c, Doz. \$7.45**

"THE ESTATE LILY"—WHITE



PARRYI

**PARRYI-600**—One of the loveliest of all native American lilies. The delightfully fragrant blooms are funnel-shaped with slightly reflexed tips, a pleasing lemon-yellow with a few faint purple-brown spots. Like many of the native species, Parryi is not easy to make feel at home in the garden. However, it is so lovely that a little extra effort is more than worth while. Grows in full sun or part shade **but demands a soil well filled with humus and always moist but well drained.** July. Heights 2½ to 5 feet. PD 5 inches. 3 for \$6.95, each \$2.50

**LONGIFLORUM Croft-430**—This widely advertised Easter Lily, originally grown only in southern Oregon, is one of the finest forcing lilies for the greenhouse. In the garden we recommend Estate but inside Croft is hard to beat. Flowers outside in July. Full sun. Ht. 1½ to 2 ft. PD 6 in.

Flowering. 3 for \$2.00, ea. 75c, Doz. \$7.75  
Large. 3 for \$2.75, ea. \$1.00, Doz. \$10.90

**LONGIFLORUM "Estate"-440**—To a great many garden folk, the "Easter Lily" is the true lily and among lilies of this type, Estate is tops. In the garden it grows 4 to 6 feet tall with six to nine huge pure white trumpets at least double the size of the old imported Easter Lilies. Estate is a lily that should be in every garden. From any standpoint it is good. The flower is large, it lasts well, it is easy to grow and with slight protection, it is hardy even up north. Don't overlook this beautiful white lily. Late July. PD 6 in.

Flowering. 3 for \$2.50, ea. 95c, Doz. \$9.35  
Large. 3 for \$3.40, ea. \$1.25, Doz. \$13.50

# The gardener who plants Lilies has imagination to be different...

to these gardeners, Lilies  
come as a new breath of  
life in the fine garden  
field...a refreshing new  
experience.

**FRANCES LARRABEE**—176—This is one of the original Bellingham Hybrid group developed by Dr. Griffiths back in 1919 at Bellingham, Wash. It is similar to the other Bellinghams in form and growth with deep cadmium-yellow blooms sprinkled with burnt-sienna dots. A most excellent but very scarce variety we have not been able to offer for many years. Late June and early July flowering. Height 6 to 7 feet. PD 6 in.

3 for \$9.65, each \$3.50

**MARGARET JOHNSON Hybrids Mixed**—481—You who have long loved the old Tiger lily and no longer tolerate its disease carrying habits, have banished it from your gardens, will welcome this strain. Its color, form and garden effect you will find it most satisfying. And it is healthy and safe to grow. In a group of them there will be some variation in color of the blooms and the way they are held but their effect in a group is excellent. Full sun or part shade. Ht. 3 to 4 ft. PD 6 in.

3 for \$2.95, each \$1.15, Doz. \$11.75

**NAVAJO**—567—A 1954 introduction by Mr. Kline. A seedling of famous Fire King (other parent unknown). Color fire red, tips of petals shaded capsicum red, very few inconspicuous dots at center of flower. Like its parent, this lily combines disease resistance and ease of culture together with a distinctly different color combination of exceptional brilliance. It flowers freely, established plants carry up to thirty large recurved blooms, outward facing on three to four foot stems. June. PD 5 in.

3 for \$10.95, each \$3.75

**LONGIFLORUM Ace**—435—This is a lily I can recommend very highly for either garden or greenhouse where a dwarf lily is wanted. Ace seldom grows over two feet tall, frequently less. However its blooms are very large, well held and freely produced on good stems. For a mass of bloom, few other lilies equal it. As a forcing lily, it exceeds the famous Croft. July-Aug. PD 6 in.

3 for \$2.35, each 90c

## New!

**PRIDE OF OREGON**—445—A Longiflorum a bit taller than ACE but not as tall as Croft. Its great value is the large number of blooms per stem and the large size of the blooms. In the greenhouse for forcing it has topped all of them in quality and freedom of bloom. PD 6 in. July flowering.

Flowering: 3 for \$2.00, ea. 75c, Doz. \$7.75  
Large: 3 for \$2.60, each 95c, Doz. \$10.40



WASHINGTONIANUM—THE MT. HOOD LILY

**WASHINGTONIANUM Purpureum**—880—Our beloved Mt. Hood Lily. The Purpureum variety is considered best for gardens and is the only one we offer. Stock is all nursery grown and fully matured. This beautiful native Lily carries up to 30 funnel shaped blooms opening white with purple dots in the throat. As the flowers age they become lilac purple. Fragrant. Plant in a loose gravelly soil with plenty of leafmold and PERFECT drainage. Prefers partial shade. Generally requires a year after planting to establish itself. PD 5 inches. Heights 3 to 6 feet. June-July. Supply limited. 3 for \$10.95, each \$3.75





Golden Splendor on the front cover is offered on page 5

# Aurelian Hybrids

by Yerex

## "The Lilies of the Future"

These and other Aurelians we offer are unquestionably the most important of all new hybrids. There's not a poor one in the lot and in vigor, freedom of bloom and resistance to disease, they are tops. They seem to withstand heavy soils but insist on good drainage. Partial shade is best though they tolerate full sun. In fact the Aurelians are so outstanding that over statement is almost impossible. Only when they flower in your garden can you appreciate their exceptional qualities.

### New...

**DOMINION Aurelians**-145-This is a gorgeous new strain developed by Dr. E. F. Palmer of Canada, now grown by Mr. Kline. They are a cross of Aurelianense and Henryi erecta producing heavy upright five to six foot stems with up to forty blooms, a dozen or more open at once. Secondary buds prolong their flowering period to five or six weeks, early July into August, making these an especially long blooming lot. The flowers are large, colors range through the pastels from light buff to apricot and cream-white. All in all, they are a glorious new break, wonderful for cutting, lasting exceptionally well. Sold in mixture only. PD 6 inches. 3 for \$10.95, each \$3.85

AURELIAN HYBRIDS — DEVELOPED BY DR. E. F. PALMER, CANADA



**AURELIAN "Apricot Trumpets"**-140-This new color break in trumpet lilies is truly welcome. These are sister plants to the beautiful Golden Trumpet listed below but their colors set them out as different and distinct. They vary somewhat in shades of apricot, saffron and tangerine, a gorgeous lot rated well toward the top of the list in new hybrids. They are vigorous and free blooming like the rest of the Aurelians and we recommend them very highly. Each \$6.50

**AURELIAN Hybrid "Eventide"**-148-This is a vigorous, 5 to 6-foot lily with immense pyramidal heads of flowers about five inches in diameter. The color is a lovely cream overlaid with saffron and blending to a deep sunburst-orange in the throat, a very lovely new lily of exquisite charm and grace. Like all the Aurelians, it is very sturdy, a good grower and a grand all 'round garden lily. August flowering. Each \$5.50

**AURELIAN "Green Gold Trumpet"**-153-This is another break we are most happy to offer. A selected strain having a lovely cool, distinctive greenish-yellow color. A few customers who have seen this strain in flower are most enthusiastic about them. We debated about offering them this year as the supply is still limited but so many have asked about them we are doing so. In growth they are the same as the other Aurelians, simply top quality and we know you will like them. Please order early. 3 for \$12.50, each \$4.35

**AURELIAN "Pink Trumpet"**-154-There is probably no other lily more desired than a good pink trumpet and now we are able to offer it. Mr. Yerex has produced it by crossing his pink Regal strain with the finest of his wonderful Aurelians. This year we are able to offer a limited number of "pinks" selected while in flower from his fields. Their Henryi and Regal blood gives them a quality and texture much to be desired. They prefer a semi-shady spot, protected from the heat of the mid-day sun. Give them good soil, a well drained spot and ample humus. In quality, they measure up to the high standards of Mr. Yerex's other fine Aurelians. I'm sure you will like them. 3 for \$9.75, each \$3.40

**AURELIAN Special Selection "Mei Ling"**-155-This very unusual and beautiful variety received an Award of Merit at the Boston Show in 1947. It's a free flowering lily with as many as 25 yellowish-cream colored blooms shading to old gold in the throat, flat faced with recurving tips. As I checked the block of them last summer, their perfection was almost unbelievable. All Aurelians are of particular value to lily hybridists as they are fertile to pollen of many type. Always plant Mei Ling in partial shade to enjoy the exquisite perfection of its coloring. 3 for \$6.25, each \$2.25, Doz. \$24.75

**AURELIAN "Golden Trumpet"**-156-We introduced this strain of yellow trumpets last year. They are big flowers in rich yellow. Form much like the famous Centifoliums and fully as vigorous. The picture fails to do them justice. Every bulb is full flowering size but the supply is limited. They propagate very readily from stem bulb-lets. Golden Trumpet is one of the most important new lilies in many decades. 3 for \$11.25, each \$3.95

**AURELIAN "Bright Cloud"**-157-This is one of the truly fine new hybrids. Established plants reach six feet and more, carrying as many as twenty large recurved blooms with margins and tips pure white and centers bright yellow. An exceptionally effective lily in the garden because of its extra long flowering period due to producing secondary blooms on lower pedicels, starting as the primary flowers are fading. Culture as per other Aurelians. PD 6 in. July. 3 for \$11.25, each \$3.95



## New...

**AURELIAN "Copper Flores"**—165—These are widely flared type blooms more open than the Moonlight Hybrids pictured on page 33. Their color, however is different as these are best described as burnished copper, a new and different color from anything before offered in lilies. I wish I could show them to you in color but can't do it this year. You will find them truly spectacular in the garden. They grow four to six feet tall and produce abundant quantities of bloom. Their flowering period is mid-summer and extended over a long period with many plants producing secondary blooms to further lengthen their season. This is one of the most important of the new lilies and we look for it to find a hearty welcome. PD 6 inches. Supply limited. 3 for \$16.00, each \$5.75

**AURELIAN "Corona Pastels"**—166—These are wide open somewhat reflexed blooms a bit like the Sunburst strain that is so very popular. They come in a wide range of pastel shades, delightful indeed. By all means plant them in clumps. The bloom from one stem is beautiful, of course, but when three bulbs are planted about a foot apart in a clump, the effect is many times more beautiful. Heights, season of bloom and planting depth (PD) are the same as other Aurelians. You'll love their garden effect and also their charm in arrangements.

3 for \$3.95, each \$1.50, Doz. \$14.95

# The Regal Lily

Long the World's  
Most Popular Lily

(and deservedly so)

## New...

**GOLDEN REGAL**—691—You who have loved the fine flowering of the Regal Lily, will welcome this new Golden Regal. It has the same fine habits as the white form but is a true golden-yellow. It flowers about the same time as the older form and the blooms are, if possible, even better. Yellow lilies are always quite scarce but today we have many of them as you will note in going through this catalog and this new form of the old Regal is one of the best. Culture and flowering season is identical. The supply is not too good as yet but we hope to be able to take care of all orders. It would be wise to order early.

3 for \$8.80, each \$3.25, Doz. \$34.00

GOLDEN REGAL



REGALE — SEE ALSO PAGE 10

**REGALE** —680— This popular lily should highlight every garden. Planted in clumps of three, seven or a dozen, they can easily make your garden the most beautiful in your neighborhood during their flowering period. Use them lavishly. Don't think because they are common and cheap that they're not desirable. Regals are deservedly one of the most popular lilies in the world today, truly the Royal lily.

They like full sun, thrive in heavy or light soils, with or without lime. Height 3 to 5 feet, late June into July blooming. PD (planting depth) 6 inches. All our bulbs are grown right here in the Pacific Northwest and shipped postpaid.

### REGALE—680—

Flowering. 3 for \$1.00, ea. 50c, Doz. \$3.75  
Large. . . . 3 for \$2.35, ea. 85c, Doz. \$9.95  
Jumbo. 3 for \$3.50, ea. \$1.25, Doz. \$12.50



# When to plant Lilies . . .

In spite of the seemingly natural urge to plant flowers in the spring, in most cases, you will have greater success if you plant Lilies in the fall. Growers dig their stocks in the fall and the sooner they are replanted after digging, the better your results in the years to come. For nearly thirty years we have been urging fall planting. Lily bulbs for spring planting must be carried over winter in cold storage and in spite of the best efforts, they are sadly dried out by spring. I'm fully aware that thousands of lily bulbs are offered for spring planting but bitter experience has proven they seldom give first class results.

Thousands of otherwise good gardeners complain they don't "have any luck with lilies" and I've asked hundreds of them, "When did you plant?" Almost invariably they reply, "In the spring." How can you expect good results when you keep a lily

bulb out of the ground and allow it to dry out in cold storage for four or five months? By spring the bulbs are half dead and those that do survive such punishment generally make such weak plants that they readily succumb to disease.

Previous to 1925 almost all lily bulbs were imported and even today, the extremely low prices of imported bulbs, due to very low labor cost abroad, tempts many dealers to buy and offer imported lilies. And the sad part of it is that all too many of the imported bulbs are diseased and these tend to spread their virus to healthy bulbs grown in this country. And in addition, nearly all imported lily bulbs arrive in this country too late for fall planting and have to be stored over the winter. In the light of the above facts, don't you see why we urge you to PLANT IN THE FALL!

**MEDEOLOIDES**-546-An Asiatic Martagon with apricot and scarlet blooms spotted black. A native of Japan where it is beloved by all. Its normal height is one to two feet. An excellent rock garden lily and should be planted in almost pure leaf mold and sand. Partial shade. PD 3 inches. July.

3 for \$4.75, each \$1.75

**HUMBOLDTII Magnificum**-398-The most striking of our natives. Strong grower, 3 to 4 feet tall, flowering freely. Blooms reflexed, golden-orange, dotted maroon, each dot bordered crimson. This Lily usually takes a year after planting to become established but is well worth the waiting. PD 6 in. July.

3 for \$6.50, each \$2.35

**HANSONI**-380-One of the best loved of the older lilies. Not only is it easy to grow but it is "different". Medium size, orange-yellow, spotted brown with up to twelve blooms per stem. A good lily for beginners as well as collectors. Plant in light shade to prevent bleaching of delicate tones. Too, it should have protection of a ground cover to save early starting shoots from frost injury.

Late June into July on four to six foot stems. We urge that orders be sent as early as possible. Late orders should suggest substitutes. PD 5 in. See color picture page 24.

3 for \$3.75, each \$1.35, Doz. \$14.75

**HENRYI**-386-This popular orange colored lily is one of the most satisfactory of all in the semi-shady garden. It is hardy, vigorous, healthy and long lived. Its soft pleasing color blends well with many other flowers. The reflexed frilly bloom, as many as 20 per stem, have an attractive green line down the center of the petals. Likes average to heavy loam, somewhat on the alkaline side. Don't use peat moss. This lily has proven especially adaptable to Florida and the south, though perfectly hardy to extreme cold. August flowering. Heights 5 to 7 feet. PD 6 inches.

Flowering .3 for \$1.55, ea. 60c, Doz. \$5.50  
Large. . . . 3 for \$2.55, ea. 95c, Doz. \$9.50

**HENRYI Citrinum**-387-A rare and very desirable lily, one of the loveliest in cultivation. Identical with the type Henryi except for color which is a clear citron-yellow. This lily is especially welcome as its season of bloom comes when yellows are scarce. Culture same as No. 386. 3 for \$11.35, each \$2.95

**HENRYI "Erecta"**-388-The much loved Henryi has a very limber stem and is inclined to bend over unless staked. Here in this new variety "Erecta", is one that has a very stiff stem, always standing erect. In other respects it is the same as Henryi No. 386. You will find it very desirable.

3 for \$4.75, each \$1.75

*"... Such gardens are not made, by saying, 'Oh! How beautiful!', and sitting in the shade."  
—Kipling.*

*Oneida, N. Y.*

*"The extra 35c for Special Delivery is more than well spent as my lilies were delivered to me on Sunday morning. Had they come by regular mail they would have had to wait until next week end to be planted as I work and the days are short, too dark when I get home at night. So thanks a lot for the suggestion of 'Special Delivery' in your catalog."*

*Miss E. J. K.*

**PETER PUGET**-608-One of the Bellingham strain developed by the late Dr. Griffiths, a distinct and attractive lily we have not been able to offer for several years. In form it is similar to the rest as pictured on page 22 but the color is capucine-yellow overlaid with red near the tips of the petals and spotted with black. A very stunning lily. Heights 4 to 5 feet. June. PD 6 inches.

3 for \$4.95, each \$1.85, Doz. \$19.50

## LILY FOOD

Unless your soil is exceptionally good you will find the Lily Food offered on page 11 invaluable. Our Lily Feeding Program is designed to provide a balanced ration of the elements your lilies need. Note the letter from Texas customer quoted on page 11. We have had many such reports.

## Annual

### "Ace" Collection No. 12-L

Here are fourteen bulbs, one to three each of seven varieties. Speciosum "Oregon Giant," Heart's Desire, Ace, Harmony, Croesus, Sunset and Formosanum late, each variety packed separately. Whether you are a beginner or just want some more lilies, you'll enjoy this collection. IF REQUESTED, we'll send you FREE, a copy of our \$2 book "Success with Lilies." The book can be sent as soon as you order that you may have full information on how, where and when to plant. Bulbs will come in **\$8.35** October, postpaid . . . . .

**YOU SAVE OVER \$4.00**

TRUMPET LILIES IN THE HARDY BORDER



*"God spoke! and from the arid scene  
Sprang rich and verdant bowers,  
Till all the earth was soft and green—  
He smiled; and there were flowers."  
—Fenollosa*

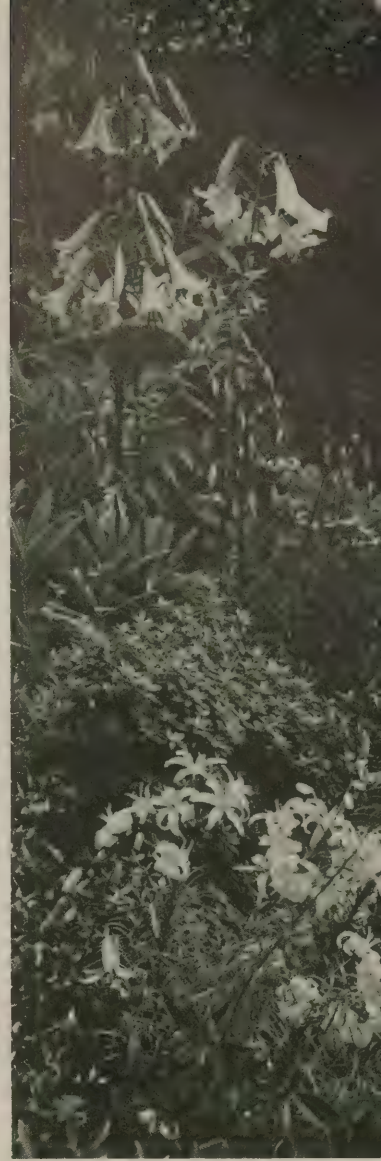


LILY GROUPS HIGHLIGHT THE PICTURE

Pamper  
your garden  
with the  
**FINEST!**  
The flower  
that is really  
***Different!***

**PLANT THREE  
OF A KIND**

We earnestly suggest the planting of three bulbs of a kind in a group for the best effect. Though one lily stem is lovely, three of a kind together is many time more beautiful. Please note the considerable savings in lots of three.



# *Lilies*

**THE GIFT OF GIFTS  
FOR GARDEN FOLK**

**FOR CHRISTMAS, BIRTHDAYS, MOTHER'S  
DAY, OR ANY OTHER SPECIAL OCCASION**

People who take pleasure in giving, take pride in choosing Oregon Grown Lily Bulbs for the "green thumbs" among their friends. They know that Lilies top the list with good garden folk everywhere. They know that Oregon Grown lily bulbs not only please good gardeners but they go on pleasing them year after year with a minimum of pampering. In the garden they make outstanding displays that are a credit to the giver as well as truly satisfying to the recipient.

For those on your list who "have everything," lily bulbs are ideal. They're different. Like a dinner invitation to the home of a gourmet, a gift of lilies holds promise of unusual pleasure and satisfaction. Even the garden that seems full to overflowing, can always accommodate more lilies. They snuggle in among other plants, demanding very little space but their exotic blooms always steal the show at flowering time. They are so out of the ordinary in their exquisite perfection that they will be remembered long after the occasion is forgotten.

Please remember that lilies, that is good lilies, can only be supplied in the fall in October and November. However, no true gardener will object to getting their Christmas gift a bit early or for gifts at other periods of the year, they won't mind waiting until fall to receive the actual package. Immediately we receive a gift order to be sent in the fall, we mail the current catalog so they may plan for the planting and make sure the soil is right. With the Gift Special suggested on this page, we also send a copy of our book "Success with Lilies." This book has helped thousands of customers succeed who otherwise might have failed.

We do not ship lilies in the spring. Bitter experience has thoroughly proven that cold storage bulbs, even the best, are a big gamble. We could sell many thousand lily bulbs every spring to folk who do not realize what a gamble they are. This business, now in its 30th year, has been built upon the practice of selling fresh dug bulbs for fall planting. We are today even more convinced than ever, that fall is the only right time to plant. For gifts that will be cherished dearly, send your order NOW.

### *A Gift Package of Lilies for that Gardener Friend*

Here are fourteen lily bulbs (two each of seven varieties), selected to make an outstanding display in the average garden without any pampering. They are lilies that may be expected to thrive without expert attention and, year after year, to grow and multiply, each season making a better display.

Included are DeGraaff's Sunburst, Golden Chalice, Oregon Pride, Enchantment, Olympic Hybrids, the late flowering Dauricum and Prosperity. Every one is a winner, every one a long lived, easy to grow variety.

Immediately we receive an order for this Gift Package, we mail the current catalog AND a copy of the \$2 book "Success with Lilies." Using this information, the soil may be prepared and be ready to plant when the bulbs arrive in October. If you wish a card enclosed, be sure to send it with the order. **We do not supply cards.** This Gift Package (27-L), postpaid to any address **\$9.25** in the U. S., only.....

**Two Gift Packages to one address for \$17.50**



*Left...*

**BELLINGHAM Hybrids—177**—This famous strain is Mar-  
tagon type, fully to partially reflexed, nodding to semi-  
outfacing. Colors range through the yellows to orange  
and red. Ideal and long lasting as cut flowers. A mag-  
nificent lot, airy and graceful, almost orchid-like. Tall,  
slender, strong stems carry up to 30 blooms each. Large  
bulbs send up two or more stalks, soon forming nice  
clumps. July blooming, partial shade, perfect drainage  
and ample humus. Height 4 to 6 feet. PD 6 inches.  
Flowering size ..... 3 for \$1.85, each 75c, Doz. \$7.25  
Large ..... 3 for \$2.65, each \$1.00, Doz. \$9.95



ENCHANTMENT (PAGE 21)

**"BEAUTIFUL TO BEHOLD, SIMPLY BREATH TAKING"**

Dallas, Texas

*"Certainly you may quote me in your catalog. The lilies were beautiful to behold, simply breathtaking. Such fine flowers and so many on each plant. They have bloomed profusely for the past three years, as high as forty blossoms per plant."*

Mrs. A. B.

**MAIDEN'S BLUSH**



**MID-CENTURY Hybrids Mixed—557**—Here's a group that have about everything. They are very hardy, establish themselves readily, multiply rapidly, they withstand almost any kind of summer weather and flower with an almost unbelievable freedom. Both upright and outfacing forms are found in this group as well as intermediates. Heights vary from 1½ to 4 feet. They flower from mid-June to mid-July. We offer these as a mixture only. Plant them in groups of three to a dozen or more. Both for garden color and cutting they are tops.  
3 for \$1.45, each 55c, Doz. \$4.30, 25 for \$8.35

**MAIDENS BLUSH—525**—This is a new lily, a 1956 introduction. It's a hybrid of Centifolium and Sargentiae and like the latter produces bulbils at the leaf axis. It is similar to many of the trumpet lilies in form and manner of growth. Of especial value is its late flowering habit, blooming after most of the white trumpets are through. Most years it is still in bloom late in August. This varies, of course, with weather conditions and different sections of the country. It's primarily a white lily but most of the blooms have a pinkish cast, which gives it its name. The normal height is 3½ to 4 ft. The lily can be a real addition to the average garden because its late flowering comes when few gardens enjoy lily bloom. Planting depth 6 inches.

3 for \$5.20, each \$1.95, Doz. \$18.00

**MAIDENS BLUSH Bulblets—525B**—We can supply a limited quantity of these bulblets, two years old, most of which will flower the second year. Plant them about three inches deep in well prepared, fertile soil with good drainage. This is your opportunity to make a stunning mass effect with this lovely lily.

5 for \$2.50, 12 for \$5.00, 25 for \$9.95

**No order accepted for less than five bulblets.**



BRIGHTEN YOUR SHRUBBERY WITH LILIES

**ENCHANTMENT—887**—Customers from all parts of the country report this one of the most colorful and brilliant lilies they have ever seen. And on top of that, they say it is such a satisfactory grower they would not want to be without it. In the flower shows from coast to coast, it again and again, "steals the show." For truly spectacular color, plant it in clumps of three or more bulbs here and there through your sunny border. The color pictures never do it justice. It's best described as vivid nasturtium-red which almost glows in the sunshine. Even on dark days Enchantment can be seen for miles away. Ht. 3 to 5 feet. Early summer flowering. PD 5 in. Likes full sun but tolerates light shade.

3 for \$1.40, each 55c, Doz. \$5.25



MID-CENTURY  
VALENCIA

**"I TOOK FIRST PLACE WITH GOLDEN CHALICE"**

Springfield, Ill.

"The bulbs came in splendid condition and I planted them all as directed in your 'Success with Lilies'. We had some wonderful blooms and I took first prize with Golden Chalice at our Flower Show. I'm sending you another order, much larger this time and I want another copy of your 'Success with Lilies' for a friend."

Mrs. E. H.

**VALENCIA—893—A** soft orange to rich yellow that makes a sparkling, brilliant color display in the late June, early July border. The out-facing blooms are lightly spotted with maroon. Valencia combines well with the famous Olympic Hybrids and make a garden group of great charm. To finish the picture, mass in the foreground a large group of the famous Jersey Gem violas and you will have a spot that will be the envy of all the neighbors. Like all the rest of this group of hybrids, Valencia is an "easy" lily under almost any conditions. It's healthy, very free flowering, vigorous and seemingly long lived. The blooms are only slightly recurved, almost flat opening and large in size. PD 5 in. Ht. 2½ to 4 ft.

3 for \$2.00, each 75c, Doz. \$7.95

*Below . . .*

**GREEN Mt. Hybrids—363**—Each year this beautiful lily becomes more popular. Many write us that they won the blue ribbon on it at their flower show. It's a persistent lily too, thriving and multiplying year after year. It will tolerate average soils but will richly reward you if you give it ideal conditions. Some of the experts rate it tops among the trumpet lilies of recent years. For cutting it is excellent. In the garden, an evergreen background makes a good foil for it freely produced blooms. Most of the blooms have green tinted throats and this together with its dark exterior makes it a delightful specimen in the border. Be sure to plant in clumps of at least three bulbs for the most pleasing effect. Heights 4 to 6 feet. July blooming. PD 6 inches.

3 for \$4.00, each \$1.50, Doz. \$15.00



# Hybrids by Jan de Graaff



PALOMINO

**PALOMINO**—593—A DeGraaff '55 introduction. Here's a most unusual lily with large recurved pendant blooms that form intriguing globes, well spaced and adequate pedicels. All in all an out of the ordinary lily. A free bloomer on five-foot stems. The color is best described as "beige," buff or Nankeen yellow, similar to the famous old Testaceum, but a bit more refined and pastel. Displayed with dark blue Delphinium, the effect is startlingly beautiful. For flower arrangements it is delightful. Early summer. Scarce. 3 for \$13.95, each \$4.75

**JOAN EVANS**—897—A brilliant golden-yellow, upright bloom, produced six to nine on thin wiry stems. A grand flower for cutting or show, it is especially fine in the mid-summer hardy border. Ht. 4 to 5 ft. Mid-July. PD 4 in. 3 for \$1.75, each 75c, Doz. \$6.50

*Below—*

See pages 24 and 25 for pictures of three lilies described below.

**FELICITY**—896—This is probably the best of all the new yellows. Very different from Destiny, this lily faces outward and the blooms are held on sturdy four to five foot stems, up where you can look right at them. Its beautiful clear clean yellow has seldom heretofore been seen in lilies. The blooms, ten to twelve per stem, are beautifully proportioned and well spaced. All in all, these new yellows bid fair to hold the stage for years to come. July flowering. PD 6 in. 3 for \$5.95, each \$1.75, Doz. \$24.00

**FIESTA Hybrids**—245—This grand strain of hybrids is one of the gayest additions to the new hardy lilies. They are mostly reflexed lilies but offer many pleasing variations in form. Colors range from bright yellows through orange to very dark rich red. Many blooms face outward and upward, some recurve only slightly. All are excellent garden flowers, grown with ease under ordinary conditions and enjoy robust health and unimagined vigor. Heights 3 to 5 feet. PD 5 inches. July flowering. 3 for \$1.60, each 60c, Doz. \$5.95, 25 for \$11.25

**TANGELO**—902—A vivid orange lily that has proven very good and is fast becoming popular. It's star-shaped, outward facing and spectacularly spotted. Its vigorous strong stems carry 15 or more large flowers; height 2½ to 3 feet. June into July. A very colorful lily for the early summer border. 3 for \$2.00, ea. 75c, Doz. \$7.75

**AFTERGLOW**—129—A DeGraaff introduction related to the Bellingham group, somewhat similar to the famous and popular Sunset. This new lily is tall, five to seven feet, with a beautiful pyramidal inflorescence and bears a large number of big flowers in a rich crimson-red with a golden center and throat heavily spotted with maroon. It's a robust lily, easily established, growing well without any pampering and quickly makes a large permanent clump, a joy in any garden. July flowering. PD 6 inches. 3 for \$5.50, each \$1.95

**CROESUS**—229—This deep golden yellow is dwarf, seldom more than two feet tall. It has a deep golden throat with a very few near-black spots. Here's an ideal lily for planting in tubs or planters. You look right down into its chalice-like blooms. Ideal for the foreground of the hardy border. Unlike most lilies of this type, there is no orange cast to it. All in all it is most worthwhile. July. PD 5 in. 3 for \$1.85, each 75c, Doz. \$7.25

**FIRECROWN**—900—Here's a superbly brilliant new lily, a vivid glowing vermilion that does not burn in our hottest summer days. Its brilliancy makes it one of the brightest color spots of the entire garden, almost as if crowned with fire. A vigorous, rapid propagator, healthy and free flowering. Height three to four feet or more. PD 5 inches. July. 3 for \$5.95, each \$1.75

**FIREFLAME**—889—A fine dwarf lily with outward-facing flowers, ideal for the foreground of the hardy border. The color is a rich mahogany-red with a few black or deep maroon spots. It is a large lily with petals of a heavy texture and flowers over quite a long period in August. You will find it a distinct addition to your mid-summer garden. Good lilies in such a gorgeous dark color are seldom to be had. Happy in either sun or part shade. PD 5 in. 3 for \$3.95, each \$1.40, Doz. \$15.25

**HARMONY**—903—Wide-petaled, upright flowering in shades of rich and brilliant orange. Among the experts it is considered an outstanding lily. Long pedicels and large flowers make it fine for cutting and large flower arrangements. Ht. 2½ to 3½ ft. July. PD 4 in. 3 for \$1.75, each 75c, Doz. \$6.50

**LUCKY STAR**—423—This is a new hybrid of the old Tiger Lily and far superior in every way. These hybrids seem completely resistant to virus disease which made the old Tiger lily a dangerous pest in any garden due to its spreading disease even though seeming perfectly healthy in itself. Lucky Strike is a large outward facing lily with many red blooms nicely spaced in tiers on five to six foot, thin but strong and wiry stems. A clump of them makes a colorful display for many weeks. July blooming, PD 6 inches. 3 for \$5.25, each \$1.95

LUCKY STAR



# Garden Magic with Lily Seed . . .

"Till now one dreamed not what could be done with a bit of earth and a ray of sun."  
—Lowell.



AURELIAN HYBRIDS AND PARENT SPECIES FROM WHICH THEY WERE DEVELOPED

## DeGraaff Hybrids— Aurelian "Apricot Queen"

**AURELIAN "Apricot Queen"**—141—A DeGraaff introduction of exceptional merit somewhat on the order of the world famous T. A. Havemeyer, really a warm apricot with lighter margins. It's tall (eight feet or more), very vigorous, free flowering and long lived. For the hybridizer, it's a real find. Only a limited supply is available. Each \$10.00

**RAINBOW Hybrids, Mixed**—673—Out of thousands of seedlings only a dozen or so have been selected for clonal propagation. The rest are rogued of all inferior kinds and we offer them in this mixture. Hundreds are similar to the named kinds but not exactly the same so must be kept separate. They are a wonderful value and were offered for the first time last year. Colors range from true golden-yellow through all shades of orange to the deepest mahogany-red. A gorgeous mixture and at this price, a rare value. Heights vary from 1½ to 4 ft. June-July. PD 4 in.

3 for \$1.60, each 60c, Doz. \$5.95

## New and Rare . . .

**GREEN DRAGON**—364—At last we are able to offer a very few bulbs of this startlingly unusual lily so many have been wanting all these years. First mentioned nearly ten years ago, every available bulb was snatched up and it had to be withheld for further propagation. This year we can supply just a few bulbs and it will be "first come, first served." Green Dragon is considered the finest trumpet lily ever produced. It is a chartreuse-colored, bowl-shaped trumpet lily, quite different from most other trumpet lilies. As a seed parent, it is outstanding and will doubtless influence the production of new trumpet lilies for years to come. Height, 5 to 6 ft. August flowering. PD 6 inches. Each \$10.00

## You can create New Hybrid Lilies right in your own garden!

The picture at the left shows parent species from which the famous Aurelian Hybrids were developed. In the upper left corner is the flower of Sargentiae from western China. In the upper righthand corner is another Chinese species, Henryi. These two were the original parents of what are now known as Aurelians. During the last two decades they have been crossed and recrossed and back crossed. Also they have been crossed with myriophyllum and with numerous trumpet lily hybrids. The other four blooms in the picture are all hybrids showing, as you see, great variation in form. In color they range from pure white, yellow, buff, orange and apricot to blends of almost indescribable beauty. They have been developed in open field culture without any pampering and only those types that stood up and survived under average conditions have been propagated. Today they are a vigorous, sturdy lot, ideally suited to average garden conditions. Among them are now found pinks, grayish-greens and doubtless the future will see color effect even more rare.

Any green thumb gardener may experiment with this strain. By starting with present day Aurelians and working on from them, results interesting indeed can be expected. The strain grows readily from seed an flowers in just a few years. You can start with bulbs and do your own crossing or we offer seed on page 39. Working with the bulbs is the most interesting. It is a do-it-yourself hobby of intense interest. It's creative work right from the start. By keeping careful records, you will find it fascinating indeed and the field is unlimited.

## Below . . . Lilies in Tubs

I'm repeatedly asked about planting lilies in tubs for use on the terrace or patio. This poses several problems not easily solved. I've covered the subject quite thoroughly in the new edition of "Success with Lilies," 2nd edition, offered on page 43. This book is sold on a money-back guarantee. If you don't think it's worth the price, mail it back and we'll return your \$2.00. We've never had one come back yet.









SUNBURST  
Page 4



OLYMPIC  
Page 8



FELICITY  
Page 22



FIESTA HYBRIDS  
Page 22



TANGELO  
Page 22



HANSONI  
Page 18



LATE FORMOSANUM  
Page 10

1957

## Masterpiece Collection No. 25-L

Our 1957 Masterpiece Collection offers three each of seven different outstanding lilies, varieties that will thrive anywhere and year after year make a better and better display. They are all foolproof varieties, every one a proven success all over the country. All will grow either in full sun or light shade, the latter preferred. The seven varieties are pictured above and with each is indicated the page on which it is described. We'll send you these 21 bulbs, each variety packed separately and labeled, a catalog value of over \$19.00, postpaid for . . . **\$15.55**

**YOU SAVE OVER \$4.00**



GOLDEN SPLENDOR AMONG PERENNIALS

"REPORT FROM NEBRASKA"

"I've ordered my lilies from you for a number of years but don't believe I have reported how very successful we have been. From one original bulb of one of the DeGraaff varieties, we now have at least thirty, some of which had 29 blooms per stem. Enchantment is all it is advertised to be. Its brilliant blooms on the four-foot stems almost hurt one's eyes in the full sunlight. It's truly an amazing lily. Dr. Able has divided and is five feet tall, just full of flowers. Aurelian Golden Trumpet is a gold-gold, very unique, and we love it. Valencia is gorgeous."

J. H. W.

**HUMBOLDTII Hybrids-397**-This is an entirely new strain with much promise, the first time we have offered it. The species, Humboldtii Magnificum, offered on page 14 is a striking lily but like most species forms, is not too adaptable to average conditions. In these hybrids we have a very strong, vigorous form, golden-orange, dotted maroon with the tips of the petals flame colored. Immense flower-heads on established plants are produced in profusion, 50 to 75 per stem. Ht. 5 to 6 ft. July. PD 6 in. Supply limited.

3 for \$20.50, each \$6.95

*Here are Three Fine Reds*

**SIAM, 740.** 1952 introduction by Palmer. A cross between two fine lilies, Skyrocket and Spitfire. Siam is clear salmon-scarlet, Turk's Cap type, semi-out-facing. Early July. New and very scarce. Height 3 to 3 1/2 ft. PD 5 in.

3 for \$12.50, each \$4.35

**SIRDAR, 742.** Another hybrid of Skyrocket and Spitfire, this one a glowing dark red, wide open, slightly reflexed and facing directly out. A mid-July bloomer of excellent quality. Height 3 to 4 ft. PD 5 in.

3 for \$12.50, each \$4.35

**SAMARKAND-746**-A third 1952 introduction, this one a cross of Skyrocket and Sultan. A large Martagon type, flowering July. Pendant blooms, pyramidal heads on 3 to 4-foot stems. Color deep glowing red. Reds, good ones, are in great demand these three will be popular when better known.

3 for \$12.50, each \$4.35

*To grow Gardens  
at their Lovely Best  
Plant Lilies*

*The "Naked Lady" Lily  
Amaryllis Belladonna*

SEE BACK COVER FOR COLOR PICTURE

Here's a gem for the garden where the ground does not freeze but a few inches. Here in Oregon we plant them eight to twelve inches below the surface and though we get some freezing, they flower beautifully. In the east, pot them up and keep in the cool greenhouse or treat them as a house plant. They send up leaves in the spring which die down after maturing and the blooms appear in late summer without any foliage. They may be brought along indoors or in the greenhouse and then the container plunged in the border where they will flower.

You'll like them in combination with the lovely Aster Frikarti pictured herewith. The bronze foliage in the background is peony leaves, a delight of the late summer garden. Garden pictures like this don't "just happen", they must be planned. These fascinatingly delightful pink lilies may well become one of the highlights of your summer garden. Truly they are well worth the little extra effort they demand.

This Amaryllis produces large to very large bulbs. We ship them in the fall along with the lilies or in mid-spring. Be sure to tell us when you want them. Pot them up at once or plant outside if your climate permits. Directions come with all bulbs. We strongly urge planting them in clumps of three or more for the best effects.

3 for \$4.75, each \$1.95, 5 for \$7.45, Doz. \$17.95

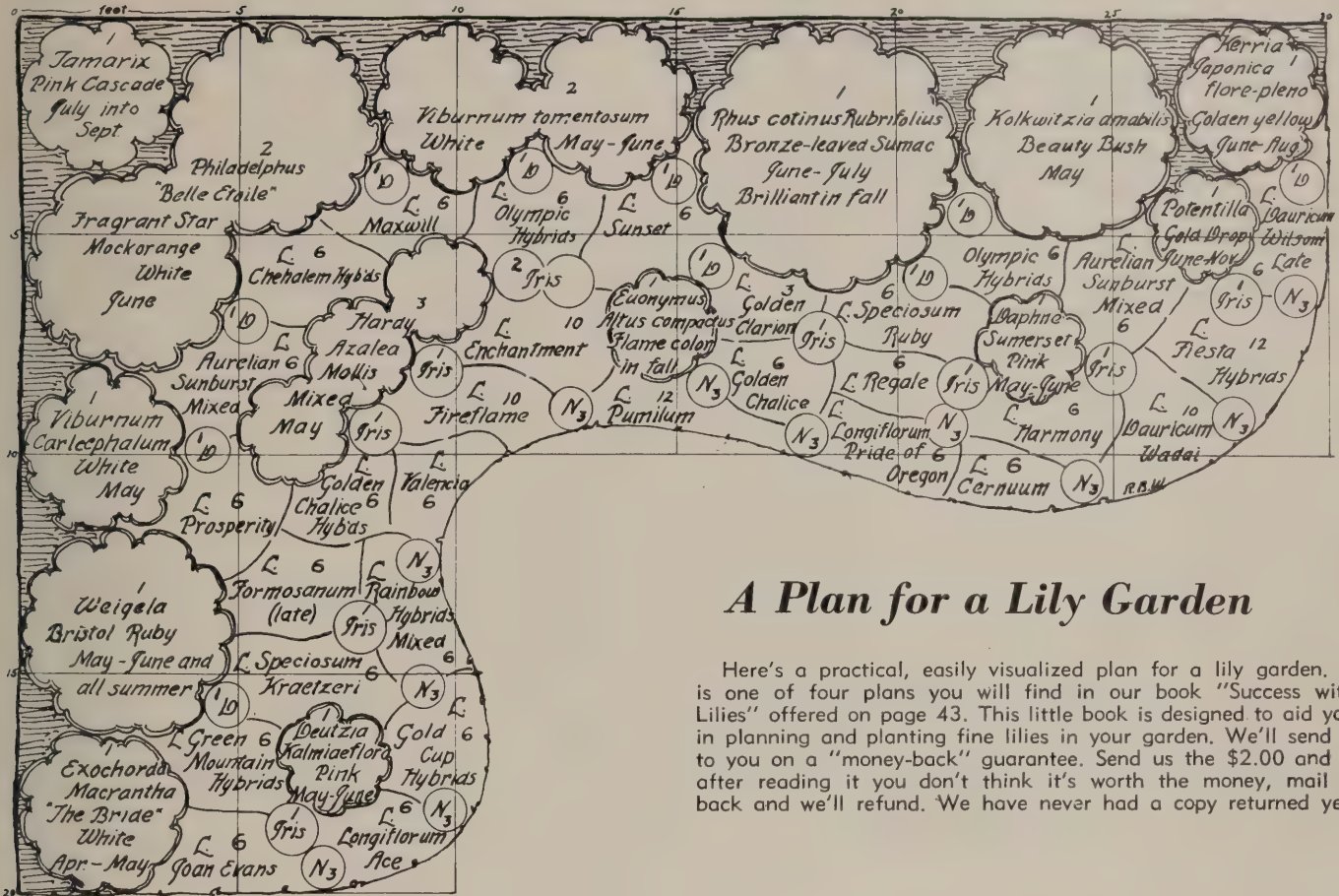
**RUBELLUM-712**-This delightfully fragrant, rose-pink lily, loved by all, opens in late May or early June, often the first lily to flower. In years past it was considered difficult but this was probably due to bulbs being imported and held in storage until spring. Now with Oregon grown, acclimated bulbs, most any first class gardener may enjoy its lovely color and charming grace. Given half shade, a moist but perfectly drained soil with plenty of humus, it has proven long lived. Ht. 1 1/2 to 2 ft. PD 4 in.

3 for \$5.30, each \$1.95, Doz. \$20.95

RUBELLUM—PINK



# Plan before You Plant



## A Plan for a Lily Garden

Here's a practical, easily visualized plan for a lily garden. It is one of four plans you will find in our book "Success with Lilies" offered on page 43. This little book is designed to aid you in planning and planting fine lilies in your garden. We'll send it to you on a "money-back" guarantee. Send us the \$2.00 and if after reading it you don't think it's worth the money, mail it back and we'll refund. We have never had a copy returned yet.

"THANK YOU FOR YOUR DOWN TO EARTH DIRECTIONS WITH THE LILY FERTILIZER"

Yakima, Wash.

"I've intended to write you a thank you note since the day I received those lovely lily bulbs. I planted them beautifully and am sure they will do you proud.

"Most sincerely I wish to thank you for your down to earth directions with the Lily Fertilizer. Your unusual common sense is an answer to every gardener's prayer. I'm sure my thanks goes for everybody that doesn't get around to writing you about it."

Mrs. E. M. H.

"I FOLLOWED YOUR DIRECTION IN SOIL PREPARATION"

From Ohio

"I'd like to report that my lilies from you are superb. I am five feet, three inches tall and I have several Olympics almost that tall. My Regals are wonderful. I followed your directions carefully on soil preparation. This year I simply have to add a few more Auratums to my small garden and some Clematis.

E. R. P.

"AFTER FIVE ORDERS, WRITES SHE NEVER LOST A SINGLE BULB"

From Iowa

"The lilies bought from you the past few years are all doing fine. Some now blooming, others full of buds. Have never lost a single bulb and what glorious surprises I have had when they bloom for the first time."

Mrs. W. G.





PAINTED LADY HYBRIDS

### *A new concept in lily colors . . .*

**PAINTED LADY Hybrids**—592—Here's color you've never dreamed possible in lilies, color almost beyond imagination. They are not brilliant or garish but rather, they have the charm and beauty of a tropical isle — they're yellow and pearl-white, a few are basically red or soft orange but the entire lot is splashed and shaded with an overlay of brown, red, gold, green, and purple. They offer some of the most delightful and intriguing color combinations imaginable. This year is the first time we have been able to show them in color and even this picture at the left fails to do them justice. This strain was first developed before the turn of the century and today our gardens know them as Backhouse and Marhan Hybrids, lilies of rare beauty. About two decades ago, Mr. Kline began working with the strain, crossing and recrossing, selecting and reselecting and now they are offered as Painted Lady Hybrids. Their only drawback is that they require about seven years to get flowering bulbs from seed and their propagation is slow and costly. However, they are healthy, vigorous and long lived and their beauty is most unusual. They flower freely over a long period, sometimes a single five or six-foot stem producing sixty blooms throughout June and July. We offer them in mixture only. PD 6 inches. Partial shade is most to their liking. I can not recommend them too highly. 3 for \$11.80, each \$4.30, Doz. \$46.50

**CHEHALEM Hybrids**—216—This is a new strain we introduced in 1950. They are large shapely trumpets of excellent texture and fine quality. Waxy-white to cream in color with throats yellow, apricot or pale green. Not spotted. The sturdy five foot stems flower freely in July. We look forward to them becoming very popular as they are better known. They are top quality. PD 5 in.

3 for \$3.65, each \$1.35, Doz. \$14.50

# *The Golden Age of Gardening is here!*

Now every garden can have charm and distinction

The hybrids described briefly below are very similar in form and habit of growth to the Painted Lady Hybrids pictured on this page. All of them are scarce and rare—exceptionally beautiful.

**BROCADE**—182—An orange-yellow with pink marbling and maroon dots. Truly a symphony of color harmony. Each \$5.65

**DALHANSONI**—250—Deep mahogany-red, almost purple-brown. As many as 40 blooms per stem. Very distinctive. Each \$5.65

**GUINEA GOLD**—366—Buds are pink, flowers a lovely yellow spotted brown. Healthy and vigorous. Each \$4.30

**MARHAN**—490—A delightful rich orange, spotted reddish-brown. Medium size blooms. A true aristocrat. Each \$3.50

**MARHAN Ellen Willmott**—491—Lustrous orange, overlaid purple. Very rare and scarce. You'll love it. Each \$5.65

**MARHAN H. J. Elwes**—496—A rich bronzy-orange, splashed with purplish-red. Exquisite and rare. Each \$5.65

**MRS. R. O. BACKHOUSE**—170—(Pronounced Back-ous) Hanson type, ivory to yellow with a translucent overcast, lightly flecked reddish-purple. An intriguing, exquisite beauty. Each \$4.30

**SCEPTRE**—768—Deep rose-pink over ivory base, tips of petals flushed fuchsia purple, flecked with deep purple spots. A lily for the true connoisseur. Each \$4.30

**SUTTON COURT**—794—A glittering canary-yellow, shaded pink with purple spots. Superlatively beautiful. Each \$4.30

CHEHALEM HYBRIDS



**DAURICUM Wilsoni, Tall late form—271**—This is an especially valuable lily due to its late flowering when none other of the type are in bloom. It's a beautiful apricot flower and a mass of them start flowering in late July and keep it up until well into September. No other upright lilies flower this late in the season and these are most desirable for the middle or rear of the border. Heights vary from 3 to 5 feet. Part shade is to their liking. In full sun they do not grow as tall. These late lilies make a beautiful show in the garden with their many upright, chalice-like blooms.

3 for \$2.95, each \$1.10, Doz. \$11.25

**ORDER NOW** — Please get your order in as early as possible. Many fine lilies will sell out early and we don't want to disappoint you.



DAURICUM WILSONI—LATE FORM



Lilies in the border among perennials generally steal the show. Your garden friends will envy you their "different" perfection.

**MARTAGON—506**—One of the oldest lilies in cultivation, a native of southern Europe and Asia, Martagon is an easily grown species. The strain we offer is purple to lilac purple in color. It prefers partial shade and is ideally at home in light woodland where it will form large colonies. Not too particular as to soils but responds to good growing conditions. Heights 3 to 5 feet, flowers in late June with up to 20 or more blooms per stem. PD 4 inches.

3 for \$5.50, each \$1.95, Doz. \$19.00

**MARTAGON Album—510**—Pure white and one of the most delightful of all species. Also, probably one of the most permanent because, once established it increases year by year, forming larger and finer spikes. The ideal subject for lightly shaded woodland though it tolerates full sun. Likes good drainage and soil well-filled with humus. Late June, heights 3 to 5 feet. PD 4 inches. Flowering size.....3 for \$4.15  
Each \$1.45, Doz. \$15.95

GOLDEN CHALICE HYBRIDS



**GOLDEN CHALICE Hybrid—870**—A very popular lily developed by Mr. Jan DeGraaff; in fact, so popular we frequently sell out long before the end of the season. It likes a warm spot in full sun and multiplies rapidly. For the best effects, always plant in clumps of three or more bulbs. A good variety for the middle or foreground of the sunny border. It's very resistant to all disease and seem to tolerate a wide variety of soils. It thrives best in a porous soil well-filled with humus and likes good drainage. Give it half a chance and it will reward you with lavish blooms over a long period.

3 for \$1.65, each 65c, Doz. \$6.50

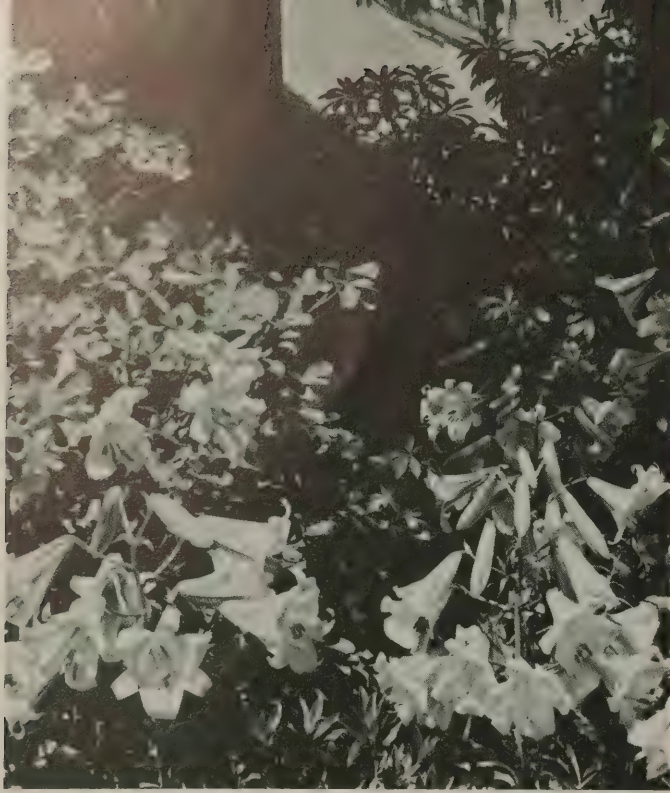
### Species Rare and Beautiful

See Pages 31 - 40 - 41

Species from the far corners of the world, Burma, China, Japan, as well as our own state of California and other places. If you are a collector of rare plants, you'll find these offerings well worth study. All are grown in Oregon and acclimated.

MARTAGON ALBUM





# SMART GARDENERS

## Plant Lilies

### Opportunity among your shrubs . . .

Good shrubbery is the foundation, the background every good garden MUST have. But shrubs without flowers are a bit drab at best. Many of the better gardeners have discovered that new modern hybrid lilies have what it takes to make even the finest shrubbery more beautiful. And lilies just love to grow up among low growing shrubs with taller shrubs as a background. Why not study your shrub planting for some truly spectacular possibilities.

**MEGA-529**—This has proven VERY GOOD in the fields and we recommend it highly for the middle or foreground of your hardy border as it grows only two to three feet tall. A lovely lemon-yellow with a few mahogany spots, outward facing and a good bloomer. Early June. Mega has a longer than average flowering period which makes it all the more desirable. PD 5 inches.

3 for \$9.35, each \$3.40

**KING WILLIAM-425**—A 1957 introduction of outstanding merit, a stately, erect plant with five to six foot stems carrying a remarkable head of spectacular bloom, forty or more per stem are not unusual. The semi-recurved blooms are a bright bittersweet color, spotted mahogany and face outward. Especially valuable is its long season of bloom, a month or more. You'll love its gorgeous color and almost unbelievable freedom of flowering. It's of the easiest culture in a wide variety of soils and prefers a sunny location. July. PD 5 inches.

3 for \$12.85, each \$4.75

**GOLDEN NUGGET-369**—A 1957 introduction. This clone was selected several years ago as an outstanding yellow in the Golden Harvest strain, see page 32. Not only is it very vigorous with sturdy strong stems six to eight feet tall but bloom is produced in profusion—25 or more large flowers per stem. The color is a true lemon yellow dotted lightly with reddish brown and the throat is sap green, a really stunning flower either in the garden or for cutting. PD 6 inches. Late July into August flowering. Light shade is best to make them last longer.

3 for \$21.00, each \$7.45

**BACKHOUSE Hybrids-171**—This famous strain is notable not only for its delightful and long lasting flowers and wealth of bloom but also for their healthy permanency in the garden. They are one of the longest lived of all lilies. Due to the fact that they propagate very slowly, they will never be cheap but considering their beauty and satisfactory performance, they are well worth their cost. In form and airy grace they are much like the lovely Painted Lady Hybrids pictured on page 28. They vary in color from ivory to gold, lightly flecked with pink, purple, brown or apricot. Iridescently beautiful. June-July. PD 5 inches. Heights 5 to 6 feet.

3 for \$8.35, each \$2.95, Doz. \$31.95

**AURELIAN "Corona" Selects**—On page 17 we offer Corona Pastels in mixture. Here we list three special select lots chosen and tagged according to color to fill your orders. They are wide open, somewhat reflexed blooms of exquisite perfection and come in three color groups—white, gold and copper. They flower in July and August when, so frequently, the garden is inclined to be a bit drab. But there's nothing drab about this group. You'll love their airy, graceful delicacy and their all around satisfactory performance.

These Aurelians produce extra sturdy stems, four to six feet tall with gorgeous big flower heads. If you have never seen present day Aurelians, you've a real treat coming. We suggest always planting them in clumps of three or more for the best effect, about a foot apart. They'll thrive in full sun but their blooms last longer in light shade. PD 6 inches.

**AURELIAN "Corona" Selects—Copper tones—169—**

**AURELIAN "Corona" Selects—Golden tones—167—**

**AURELIAN "Corona" Selects—White and ivory tones—168—**

Any of the above three priced . . . . . 3 for \$8.35, each \$2.95

**Special**—3 each of the above three numbers—167, 168, 169—only **\$23.95.**

**SUPERBUM-796**—Among native American lilies this is one of the best. It might well be considered among the finest of our native flowers. The bright orange blooms suffused yellow with red tips and maroon spots are spectacular, true Turk's Cap form. Sturdy stems 5 to 9 feet tall carry up to 40 large nodding blooms. Superbum prefers a moist soil, plenty of humus and partial shade. July-August. PD 5 in.

3 for \$1.85, each 75c, Doz. \$7.35

**SHUKSAN-790**—Among the named Bellingham Hybrids, most experts consider this the best. On 4 to 6 foot stems it produces 15 or more Martagon type, irregularly reflexed blooms, cadmium-yellow, faintly flushed red at the apex, with a few black dots. Shuksan is a good garden lily, spectacular in bloom and a good cut flower. Always plant in clumps of three or more either in full sun or part shade. It demands good drainage and ample humus in the soil. July flowering. PD 6 inches.

3 for \$2.25, each 85c, Doz. \$8.75

**SUN BRONZE-797**—Here's a lily somewhat similar to the famous Fire King not available this year. It's brick-red dotted maroon. A very vigorous lily and extremely free-flowering. Flowers face outward and about two-thirds upright. This, with its height of 2½ to 3 feet, makes it a good lily for the middle of the hardy border. Cinnamon-brown anthers harmonize nicely with the flower's general color. Early July flowering, full sunshine, PD 5 in.

3 for \$5.65, each \$1.95

**SUNSET Improved-597**—This is an improved form of *Pardalimum Giganteum* (believed to be a natural hybrid between *L. Pardalimum* and *L. Humboldtii*). Sunset has been sold under various names including Western Sunset, Red Giant and Chinook Lily, but under any name it is a fine lily, popular wherever grown. See it in color on page 33. This Improved form is similar in almost all respects except color, which is tangerine-orange at the base with the outer half of the petals deep orient-red and the throat dotted dark garnet-red. Height is 5 to 6 feet or more. Full sunshine, PD 5 in. July blooming.

3 for \$6.50, each \$2.35

### PARTIAL SHADE

*Maybe you wonder just what we mean by partial shade. It may be the shade of tall trees or the shade of a building but it should protect the plants from the sun during the heat of the day, say from ten AM until three PM. Early morning sun or late afternoon is OK.*

# American Species—Rare and Beautiful

Here we offer eight fine American species, varieties native to the mountains and meadows of this country. They are scarce and rare. All are being grown by Mr. Kine in Oregon. On page 15 we offer the glorious Washingtonianum and on page 18, the striking Humboldtii, two of the finest American natives. Given soil to their liking, they are jewels indeed.

**BOLANDERI**—169—A dainty but highly colored species from the Siskiyou mountains in southern Oregon. Bell-shaped flowers, deep crimson to pinkish-red with purplish dots. The bulbs are small and demand a very well drained soil with lots of humus, leaf-mold preferred. Be sure it never wants for water. July. Heights 1 to 3 feet. PD 6 inches. Each \$4.00

**COLUMBIANUM** *Ingrami*—219—A robust form of this rare lily bearing many small golden-yellow reflexed blooms. Likes either full sun or part shade and a cool well drained soil full of leaf-mold and always moist. June-July. Heights 3 to 4 feet. PD 6 inches. Each \$4.00

**GRAYI**—360—A delightful little lily somewhat resembling the lovely *Canadense*. Outside of blooms is crimson; orange inside with many reddish-purple dots. Try planting it with a ground cover of ferns against a blue flowering hydrangea. You'll be surprised how the brilliance of the lily will enliven the blue of the shrub. A moist location in partial shade suits this lily best. Our bulbs are the true form and stock is limited. Heights 2 to 3 feet. PD 4 inches. 3 for \$3.35, each \$1.25

**KELLOGGII**—406—This is our native West Coast Martagon, with fragrant nodding flowers, pale pink with a yellow stripe through center at each petal and finely spotted with maroon. An attractive, dainty lily, demanding a moderately moist, partially shaded spot with good drainage and preferably a gravelly soil. Heights 2 to 3 feet. June-July. PD 4 inches. Supply very limited. Each \$4.95

**MICHIGANENSE**—556—Another native, this one from the middle-west, possibly a hybrid between *Canadense* and *Superbum*. Blooms vary from a brilliant red to shades of yellow, profusely spotted with purplish brown petals reflexed. A good lily for the woodland garden where it finds partial shade and ample moisture. July. Heights 2 to 5 feet. PD 5 inches. 3 for \$4.50, each \$1.65

**OCCIDENTAL**—580—A rare native lily from the west coast which accommodates itself nicely to garden conditions. Its small bell-shaped blooms are orange-red with throat spotted maroon. As the petals age they become recurved. Like most native lilies, partial shade is most to its liking. Prefers a lime free soil with plenty of leafmold or peat moss. July. Heights 2 to 4 feet. PD 4 inches. Each \$3.50

**VOLLMERI**—874—Formerly known as the red form of *Roetzlii*, it is quite similar to the *L. pardalinum* with nodding turkscap flowers, a true bog lily. Not an easy lily to establish in gardens. July. Heights 3 to 5 feet. PD 6 inches. Each \$2.75

**WIGGINSII**—808—A yellow turkscap lily somewhat similar to *Columbianum*. Purple or mahogany spots. Another true bog or swamp lily. Early July. Heights 2 to 3 feet. PD 5 inches. Each \$7.00

SUNBURST (SEE PAGE 4)



## Hymenocallis—The Spider Lily

SEE COLOR PICTURE ON BACK COVER

If you've never enjoyed the Spider-lily (*Hymenocallis*) in your garden you have a rare treat coming. While not a true lily like *Auratum* or the *Regale*, once blooming in your garden, you'll never want to be without them. An absolute "must" for the all-white border or the scented garden. As all blooms do not come at once, their season is quite long.

By starting indoors early in January or February, they may be forced into early bloom. For early outdoor bloom, start in pots inside during March or April, plunging the pots outside when danger of frost is past. You may have an all-season succession of them by holding bulbs in a cool, dry place from winter to early summer and planting at intervals of a few weeks. After danger of frost is past plant them right out in the garden.

Spider-lilies like a rich, friable soil, well filled with humus and perfectly drained. Peat moss is ideal for humus and add compost if you have it. Mix in thoroughly. For flowering in pots, put one bulb in a five or six-inch pot with the top of the bulb just at the surface. Be sure the soil is right. Outside, cover the top of the bulb with three or four inches of soil. Full sun is best but broken shade will do nicely.

The Spider Lily is not hardy where the ground freezes, so must be wintered inside. Take it up in the fall after the first frost, dry it off and store in a cool, dry place where it will not freeze. We can supply them in the late spring or in the fall. We only offer large bulbs that will flower the first season, shipped postpaid. **3 for \$5.00, each \$1.95**

### ORDER NOW - DON'T WAIT

Unlike many other things you buy, nursery stock should be ordered in advance—long before the right shipping time. Why? Because our whole year's shipping comes in a few short weeks and there is never enough help. Shipments and scheduling must be planned in advance. So PLEASE ORDER NOW, we will ship at the proper planting time for your area.

# GOLDEN HARVEST *Hybrids*

We introduced this strain in '54 and it is easily one of the most important of the new lilies. The picture on this page does not do them justice as the printer made it too orange. This strain contains NO ORANGE lilies but is made up of creamy whites, with delightfully colored throats, buffs, pale and bright yellows and a wide variety of shades and tones in between. If you could see the field of them in bloom, you would pronounce them outstanding.

And not only are their colors most pleasing but they have a degree of vigor and vitality almost unbelievable. They produce enormous flower heads on heavy five to seven foot stems without any pamer-ing. Truly, they are "lilies of the future", lilies for every man's garden.

These Golden Harvest Hybrids are the results of nearly two decades of hybridizing using the famous Sulphureum and Henryi. This is a cross similar to the very fine Havemeyer strain. Through the years it has been crossed and re-crossed, selected and back crossed, using only the outstanding specimens as seed parents. Today they stand close to the top among the newer hybrids.

To enjoy their delightful colors to the utmost, plant in light shade. They grow well in average soils but reward you handsomely for careful preparation. As a cut flower, I've kept them eight days on my desk, a joy to behold.

**GOLDEN HARVEST Hybrids, Mixed-367**—We offer them in three sizes. They flower from mid-August into September when fine lilies are at a premium in the garden. This late flowering makes them doubly welcome. Give them plenty of room, planting about fifteen inches apart. Planting depth (PD) 6 inches.

Flowering size.....3 for \$5.65, each \$1.95, Doz. \$22.30  
Large.....3 for \$6.50, each \$2.35, Doz. \$24.95  
Extra large.....3 for \$8.35, each \$3.00, Doz. \$33.00

**GOLDEN HARVEST, Select Color Strains-367C**—Mr. Kline has segregated some of the best of the strain in separate color groups so you may buy them in Yellow, Light Buff, Dark Buff, Cream, Gold, Green-white and Bi-colors. These are not clonal propagation but are his selections by color. In ordering please state which of the above colors you desire. 3 for \$9.25, each \$3.25

**SHELLROSE Hybrids-684**—Here's a 1956 introduction, a trumpet lily in variations of shell-pink, cameo-pink and pale rose. Some are entirely pink, others white-faced with pink edging on the petals, which are frequently ruffled. All have rose or purple exteriors. Though not as dark as Amethyst Temple Hybrids offered on page 9, they are a lovely lot and delightful either in the garden or for cutting. Partial shade and cool, moist soil during bud growth is very important to sustain their pastel coloring. June-July flowering. Ht. 4 to 6 ft. PD 6 inches.

Flowering.....3 for \$3.65, each \$1.35, Doz. \$14.50  
Large.....3 for \$5.50, each \$1.95, Doz. \$21.50



GOLDEN HARVEST



SHELLROSE HYBRIDS

## *Golden Harvest Special Selects*

**GOLDEN HARVEST Special Selects-368**—In every lot of seedlings, there are always a few especially outstanding. This exceptional lot have been taken out, propagated by scales, and we offer them as Special Selects. Golden Harvest Hybrids are among the finest new strains and these are super-fine selections, truly an extraordinary lot. They are super in size, form and substance; they hold their blooms effectively; in fact, they are super-fine in every respect. Color range is from ivory-white with highly colored throats, down through cream, buff, to many shades of yellow and apricot. There are no oranges. If you want the very best of the Golden Harvests, these No. 368 are it. 3 for \$19.60, each \$6.95



**MOONLIGHT Hybrids—538**—Selected from the thousands of fine new hybrid lilies grown here in Oregon, this strain is just about tops. They are cream and light yellows, a welcome lot in any garden. You will find them not only easy to grow but long lived and year after year they will make better and more gorgeous display. They are trumpet lilies, large and spectacular, held beautifully on four to six-foot stems. Blooming in mid-summer when all too few lilies are found in most gardens, I'm sure they will like their gorgeous effects. Sold in mixture only. Their sturdy stems hold up to thirty big blooms which supply flowers over a period of three to four weeks. Their blooms, of heavy substance, withstand wind damage to a surprising degree. Their wiry stems sway with the wind but seldom suffer injury. I've watched this strain for more than a decade and can recommend them highly.

3 for \$5.15, each \$1.75

MOONLIGHT HYBRIDS



SUNSET

**PARDALINUM Giganteum—596**—This gorgeous giant of a lily has been sold under such names as Western Giant, Red Giant, Western Sunset, Chinook Lily and Sunset Lily. We have always used the latter but under any name it is a most desirable acquisition to the garden. No one knows for sure what was its origin but it is thought to be a natural cross of *Pardalinum* and *Humboldtii*. Plant it in full sun if possible though in slight shade it does very well. The plants grow 5 to 8 feet tall, each stem bearing up to 30 or even more, crimson and golden-yellow blooms profusely spotted with purple-black. The sturdy stems require no staking. All in all it is a most satisfactory lily, perfectly hardy, not particular as to soil and once established makes sizable clumps and a glorious show year after year. Always plant in groups of three or more about fifteen inches apart. July blooming. Planting depth 5 inches.

Flowering . . . . 3 for \$1.95, each 75c, Doz. \$7.75, 25 for \$15.25  
Large . . . . . 3 for \$2.50, each 90c, Doz. \$9.95, 25 for \$19.75

**GOLD CUP Hybrids—296**—We introduced these in 1949 but they proved so very popular they had to be withdrawn to build up stocks. We have a fair supply this year but early orders are advisable. Gold Cup is a vigorous group upright flowering, one and a half to three feet tall, very free flowering. The blooms are large, varying from bright orange-yellow through shades of apricot to chrome-yellow. Ideal for the middle or foreground of the border. They like full sun. June. PD 4 inches.

3 for \$3.25, each \$1.25, Doz. \$12.40

MOUNTAINEER

### *An Early Season Beauty*

**MOUNTAINEER—532**—This is one of the famous U. S. Dept. of Agriculture Beltsville hybrids we introduced in 1956. Unquestionably they are among the best of the recent new lilies. From the picture, you'll note their airy grace, their flat wide opening form. They are different from most of the recent introductions and in the garden picture should find a ready welcome. According to the official color chart, they are capsicum-red, brilliant and delightful. Blooms are held on three to four foot stems above a wealth of dark green foliage, a factor that greatly enhances their garden charm. Coming into bloom in early to mid-June they are a welcome addition to the early summer-garden. Unlike many of the finer lilies, they enjoy full sunshine they will reward you well if the spot is fertile and well prepared. PD 5 inches.

3 for \$6.75, each \$2.50, Doz. \$19.50



**TRUMPET Hybrids—793**—This is a grand strain of pale yellow to sulphur-yellow trumpet lilies, which, flowering in July are most welcome. They are selections from a cross of Crows Hybrids with the very beautiful Sulphreum, vigorous, healthy, asking no pampering. You'll find them most worth while. Ht. 5 to 6 ft. PD 6 in.  
3 for \$10.35, each \$3.75

**TIGRINUM Diploid Form—807**—Unavailable 1957.

**UMBELLATUM Incomparable—864**—Here's a rich crimson, the best of the medium reds and one of the most satisfactory of the strain. Like the rest it is of the easiest culture and thrives in average garden soil in a sunny location. Truly they make a luminous mass of color in the early garden. They are equally good in the garden or as pot plants. This one is inexpensive and you can afford to plant it freely. 2 to 3 ft. PD 5 in.  
3 for \$1.25, each 50c, Doz. \$4.95

**VIKING—871**—Unavailable 1957.

### Here's a brilliant new RED!

**VALIANT—873**—One of the most brilliant red lilies ever offered, a red without any orange cast to it, enhanced by a few black spots and, it does not fade. A vigorous, healthy, free flowering lily, large to very large, slightly recurved with the blooms ideally held about three-quarters upright. Flowers for about three weeks in July. In the field, this red lily stands out as the most brilliant of all. Flowering . . . . . 3 for \$ 6.95, each \$2.50, Doz. \$27.75

FIESTAS — SEE PAGE 22



FIESTA HYBRIDS (DESCRIBED PAGE 22)

Don't overlook the wonderful possibilities of lilies as cut bloom for arrangements. Cutting with reasonably short stems does not harm the bulbs and lilies lend themselves most admirably to decorative effects.

#### "PREPARED THE GROUND AS YOU PRESCRIBED"

*From Wisconsin*

*"Most of the seventy-five lilies I ordered last fall are up and flourishing—and How!! A few have already bloomed. I enjoy your lilies so MUCH. We prepared the ground with depth, drainage, fertilizer, sand and humus just as you prescribed and the result is soul satisfying. The instructions for planting and care are most complete."*

*Miss M. W.*

*P.S.—"I used your Micronized Copper and not one lily has failed to be sturdy and healthy. My white Martagon lilies were very lovely beside my terrace wall among ferns and Astilbe foliage. I shall spend more time next year getting just the right perennials near each kind of lily as profuse bloom detracts from the effect of the lilies."*

#### "FOUR HURRICANES IN ONE YEAR AND ONLY LOST TWO LILIES"

*From North Carolina*

*"Your lilies are beautiful and certainly must be hardy. Have been through four hurricanes in a year, some with winds over one hundred miles an hour, and have lost ONLY two lilies."*

*Mrs. E. B.*

### An invitation to join the North American Lily Society

This active society with thousands of members welcomes all who are interested in lilies. Membership will bring you their cloth bound year book, easily more than worth the annual dues, as well as numerous informative bulletins throughout the year. To join, simply send your name, address and \$3.00 to the Secretary, Mrs. W. A. Rowell, 5537 15th Ave. So., Minneapolis 17, Minn.

# Havemeyer Hybrids

## You'll say it, too...

### "They're Wonderful"

Sooner or later, you, too, will discover the delightful garden effects possible with the new lilies. You'll learn how easy they are to grow. After their first season's glorious bloom, you too, will say, "They're wonderful!"

### New...

**MARLYN ROSS-907**—A 1955 introduction from New Zealand, quite "different" and most worth while. It's lemon-yellow, upright flowering with a broad orange band down the center of each petal and attractively dotted with small, deep maroon spots. The form is unusual; when fully expanded, the flower is a flattish cup, about two and a half inches deep and six and a half inches wide. The blooms are well held on three to four-foot stems. This is a new lily and still scarce. Each \$10.00

### New 1957

**TOM BARRY-799**—A 1957 introduction. Here's a new lemon-yellow that bids fair to rate near the top among the finest new lilies of the decade. It is being grown exclusively by Mr. Kline here in Oregon who named it for its originator back in New Jersey. The blooms are widely expanded, almost flat opening bowl-shaped with recurved tips and are held semi-outfacing on very strong five to six foot stems. Out here they are at their best during early to mid-August and will thrive in either full sun or part shade, in the latter, the lovely colors naturally hold better. I've watched this lily for several years and it is one of the finest. The originator is the same chap who gave us the famous T. A. Havemeyer offered below. The supply is quite limited as yet. PD 6 inches. 3 for \$29.50, each \$10.00

## The Sensational T. A. Havemeyer

**T. A. HAVEMEYER-800**—This unusual hybrid is one of the sensations of the lily world. It resulted from crossing L. Henryi and Sulphureum. The experts consider its exquisite beauty to be in a class with Auratum. As a cut flower it is superb and long lasting.

Blooms of T. A. Havemeyer have been exhibited seven inches in diameter without spreading the petals and they have been grown in the open field eleven feet tall. But size and height are secondary to its unusual and exquisite color. It is a warm ivory-yellow, suffused with apricot. The outside of each petal has a band of vivid green. Words can not adequately portray the perfection of its beauty, it is simply indescribable. Vigorous, free flowering, healthy and disease resistant, this lily seems to have everything. No wonder the experts say it is sensational!

The usual height is seven to eight feet. Flowering from mid-August into September it is doubly welcome as few other lilies are then in bloom. It is tolerant to ordinary soil, full sun or partial shade. This lily, of course, responds to good treatment and will reward your care richly. It is a lily for every garden and as it becomes more plentiful will be planted far and wide. PD 6 in. Supply limited. 3 for \$21.00, each. \$7.50

Here are four very fine hybrids developed by Mr. Edgar Kline. They are outstanding in vigor and freedom of bloom, outstanding in garden performance and their colors are most unusual. In form they resemble the famous Havemeyer. I'm sure they will not disappoint you.

**EDMUND L. KAGY-818**—A stunning erect six foot beauty, persimmon-orange, lightly flecked oxblood-red. An 8 inch bloom, recurved tips. An exquisite lily, very erect.

**PAULINA KLINE-810**—A stunning majolica-yellow shading to saffron, flecked at base of petals with oxblood-red—back of petals lettuce-green. Flowers 5½ inches (expanded 8 inches).

**WILLIAM BATES-814**—Light tangerine-orange shading to ivory. Flower 5 inches, fully opened, slightly recurved. The color tones of this lily are superb.

**IDA JANE CALIF-820**—This is somewhat different from the rest, a dainty medium size bloom only three feet tall. Majolica-yellow with border spotted red half way to the tips. Recurved.

Any of the above 4 named selections \$6.95 each.

LILIES IN KANSAS . . . TEMP. 103

*April in Kansas*  
"I have had very good success with your lily bulbs. I wish you could have seen my Centifoliums (Olympics) last year—twelve and fourteen blooms per stalk and the thermometer a hundred and three. They were simply breath taking. Now they are six inches high and so healthy looking. And still 'they' say, lilies don't do well in this part of Kansas."  
MRS. C. L. L.

"I CUT AND SOLD 250 BLOOMS"

*From Tennessee*  
"Now just a word about my Havemeyer lilies. They are one of the most satisfactory lilies I know of and I have a great many kinds. I have had the Havemeyers longer than any other lily—I bought it before I knew of any special preparation for them. They grow in my perennial border in ordinary soil. I originally planted it deep with a bit of sand under and around it. The original bulb has grown and multiplied—I have divided with my garden friends, had more for cutting and garden beauty than I needed. One year I sold 250 blossoms to the local florist. They start blooming the first of July and continued into August."  
Mrs. K. B.

LILIAM T. A. HAVEMEYER (TRUE)—IVORY-YELLOW, SUFFUSED APRICOT



## Out of the West—

There is not room in this modest catalog to print the many hundreds of letters we get telling of the gorgeous blooms and garden interests produced by our bulbs. From every corner of America and many foreign lands they come and regardless of the wide variation in climate, Oregon grown bulbs seem to thrive and satisfy. Grown for you in the fertile valleys and foothills of the Cascades, fresh dug at the peak of their maturity, packed carefully and rushed to you without delay, it's no wonder you write that you "never saw such wonderful bulbs". Our bulbs are not dried out from laying on a store counter, they have not been pawed over by customers seeking bargains, they have been dug because you ordered them and are shipped to you with the least possible delay. Truly there's a reason for the difference you see in fresh dug bulbs!

**SPECIOSUM "Crimson Glory Strain"—781**—This is a selected strain of extra choice quality. They are much darker than the average and exquisitely delightful in the garden picture. Speciosums have long been one of our most popular lilies. Originally, they were all imported but now are being grown in Oregon, a sturdy, vigorous lot. Crimson Glory is one of the best and given a location where its beauty can show off against a shrub or evergreen background, the effect is truly soul satisfying. August flowering. Heights 3 to 5 feet. Planting depth (PD) 6 inches.

3 for \$5.00, each \$2.00, Doz. \$19.00

SPECIOSUM ALBUM-NOVUM



"All that Nature did omit,  
"Art, playing Nature's  
second part, supplied."  
—Spencer.

## Lilium



### Speciosum Special No. 36-L

Here's an extra special offer. I'll ship to you in October, three each of three different Speciosums — namely Ruby, White Pearl and Magnificum PLUS three bulbs of Henryi No. 386 known as the Golden Speciosum. This is three each of four fine lillies, a dozen bulbs, catalog value \$12.95, **\$10.60** postpaid only . . . . .

**YOU SAVE \$2.35**

### At the Left . . .

**SPECIOSUM Album-Novum—774**—This scarce and very rare lily is an exceptionally beautiful form of this species, pure white with yellow anthers and broad massive petals of great substance. Too, it is a week to two weeks later in flowering than the rest, making it especially welcome to extend the season of these choice lilies. Height, culture and planting depth are the same as the rest. Anyone who loves truly fine lilies will consider this a must.

3 for \$6.95, each \$2.50, Doz. \$27.75

# Speciosum

**The NEW Speciosums... a modern development of the ancient wild form from Japan... exquisitely delicate and sturdily healthy... as modern as tomorrow.**

For all around satisfaction, these lilies would probably top any list. Not only exquisitely beautiful, they thrive in the average garden without special effort. In soil well prepared and containing ample humus, they are long lived, growing vigorously for many years. Speciosums do not like a hot dry soil. In a cool moist soil (perfectly possible with good drainage, humus and a ground cover planting), they will reward you handsomely. Partial shade from hot sun prolongs their flowering period. Speciosums are easily the highlight of the late summer garden. PD 6 inches.

**SPECIOSUM White Pearl-771**—You who have loved the old "so called" Rubrum Lily will find this White Pearl Speciosum one of the loveliest of all. It's a glistening, sparkling white almost iridescent. Form is similar to other Speciosums but this seems even daintier. For cutting and corsages, it almost rivals the orchid. White Pearl opens a week or so later than the pink forms, it lengthens the season, a most desirable feature. Light shade is important, especially in warmer areas, to prevent sun burning and opening too rapidly. Culture is the same as for other Speciosums.

Flowering... 3 for \$3.50, each \$1.25, Doz. \$13.75, 25 for \$27.75  
Large... 3 for \$4.75, each \$1.75, Doz. \$18.95, 25 for \$37.75

**SPECIOSUM Punctatum-778**—This is an early flowering form of this species, blooming about two weeks ahead of the rest and most welcome because it extends the season of these popular lilies just when we need them to round out the garden scene. Like the rest it is a vigorous lily with sturdy three to five foot stalks carrying, when established, up to 20 frilly, recurved, pendant blooms. Partial shade is to its liking as the color is a delicate carmine, lovely and very distinctive. Seldom do we have enough of this early variety so prompt ordering is suggested.

3 for \$5.65, each \$1.95, Doz. \$22.50

**SPECIOSUM "Little Star"-786**—Here's a true gem, a new beauty. It's a bit smaller flower than other speciosums, also not quite as tall. And the petals do not recurve as much, making it indeed a beautiful star shaped flower, not only delightful in the garden but excellent for corsages and flower arrangements. The bulbs propagate rapidly by division and also by stem bulblets. The color is quite similar to Magnificum, truly an exquisite flower which will be very popular as soon as known. 3 for \$7.10, each \$2.50, Doz. \$28.50

**SPECIOSUM Magnificum-779**—This and Melpomene are the most brilliantly colored of the species. Magnificum is heavily toned with deep ruby-carmine and spotted crimson, the darkest colored of all. For border display, three or six of them make a truly spectacular show. This and the other Speciosums all show off better against a dark green background. August into September.

Flowering... 3 for \$3.25, each \$1.25, Doz. \$12.75  
Large... 3 for \$5.30, each \$1.85, Doz. \$20.50

**SPECIOSUM Seedlings "Select"-780**—Here's a group of Kline's seedlings, the results of many years of crossing and re-crossing with various strains. In the fields they have proven very healthy and vigorous with clear vivid colors and strikingly large blooms. As we all know, seedling grown stock is usually superior and here is your opportunity to plant seedling speciosums at a reasonable price. Colors range from the carmine pink of Oregon Giant to shade that are both lighter and deeper. They are sold in mixture only and I know you will find them truly good. I recommend them very highly. Ht. 3 to 5 ft. PD 6 in. 3 for \$3.95, each \$1.40, Doz. \$14.50

**SPECIOSUM Magnificum, Darkest Red Selections-779D**—These are similar to the famous Melpomene Type no longer offered. They are drak crimson flowers, edged white. They grow three to four feet tall and flower freely about the same time in the late summer as the regular Magnificum. All in all, they are a gorgeous lot worthy of inclusion in any garden. Speciosums are among our best loved lilies and Mr. Kline has worked with this group for many years before introducing them. You'll find them very worth while. PD 6 inches. Partial shade and rich soil amply filled with humus. 3 for \$9.00, each \$3.25

**SPECIOSUM Ruby-777**—This new variety is very similar to our famous "Oregon Giant", just slightly darker in color but equally vigorous and free flowering. I've been watching this variety for several years and think you will find it much to your likes. All the speciosums are good but these Oregon grown strains are simply superb. They seem to have a strength and vitality far greater than the older imported bulbs. "Ruby" is a specially grown Oregon strain and I'm sure you will like its dark carmine-pink brilliance.

Flowering... 3 for \$3.25, each \$1.25, Doz. \$12.75  
Large... 3 for \$4.60, each \$1.75, Doz. \$18.00  
Jumbo... 3 for \$5.95, each \$2.25, Doz. \$22.75

## Below...

**SPECIOSUM Oregon Giant-782**—This is the most popular of all the Speciosums we offer, and deservedly so. Its blooms are large, freely produced, the petals are broad, the form and color are exceptionally fine. All in all it tops the list. Last year it had to be withdrawn due to short supply, but we now have quite an ample stock. It is the punctatum type, white with pink spots and blotches. You will call it pink and simply fall in love with it. Long lived, vigorous and healthy, it seems to thrive most everywhere. Seems extra good in the south and California. Ht. 3 to 5 ft. PD 6 inches. Early orders are advisable.

Flowering... 3 for \$3.95, each \$1.40, Doz. \$14.50, 25 for \$28.50  
Large... 3 for \$5.00, each \$1.85, Doz. \$19.50, 25 for \$38.50

SPECIOSUM OREGON GIANT



# Planting and Care of Your Fine Lilies

Your success with lilies will largely depend upon how well you prepare the ground, upon proper drainage and upon your planting the bulbs PROMPTLY upon their arrival. The best bulbs will not succeed if simply stuck into the ground as you would tulips or glads. Lilies are "different," they demand a bit more preparation but I'm sure you will agree they are well worth it. I'll here give you general directions on planting and care of lilies but I urge you to send for a copy of our book "Success with Lilies" (\$2.00) as offered on page 43. If you will study this little book and plant as directed, your results should be assured.

**Good Drainage** Lilies DEMAND good drainage. If your soil is heavy and water stands after a rain, you will be wise to build up raised beds so the soil surface is six to eight inches above the normal soil level. In sandy loam this is not necessary. Heavy soils must be modified by THOROUGHLY mixing in sand and peat moss to a depth of a foot. The sand permits excess water to drain away, the peat helps to aerate and acts like a sponge to hold a modicum of moisture. Air drainage is important also as circulating air can keep plants free from disease and insect pests whereas stagnant air encourages trouble.

**Shade or Sun** Lilies need sunlight with a few exceptions. We have tried to indicate their likes or dislikes in this respect in descriptions and on the label when shipped. Filtered sunlight or light shade is important with varieties of delicate color but sunlight tends to increase vigor and strength of stem. Avoid planting near house walls or beside walks or drives that reflect hot sun.

**Depth of Planting** This is important and is given for each variety on the label. Planting depth (PD) is the depth of soil over the top of the bulb. This varies with those that produce stem roots above the bulb and those with basal roots only.

**Mulch and Ground Cover** Lilies like to spread their roots in a cool, moist soil and to maintain this condition is important. Ample peat in the soil helps but mulching the surface with coarse material or planting a ground cover helps also. Avoid ground covers with vigorous heavy roots. Some lilies will tolerate them but others may suffer. Lilies don't seem to mind being crowded in among other plants, in fact they like it as you will note from the pictures in this catalog. Low growing shrubs and perennials are ideal. Avoid planting among flowers with vivid masses of bloom that overshadow the beauty of the lily by sheer mass of color. Contrasting and harmonizing color masses are desirable. This is one of the fascinating phases of gardening, to work out pleasing combinations of plants. It can easily become a lifetime occupation. Lilies don't need cultivation when properly planted as their roots are close to the surface. Ground covers and mulching tend to keep the soil cool and moist and also to discourage weeds.

**Cutting Lilies** Lilies, like other bulbous plants, need their foliage and stems to build for next year's growth but cutting the bloom only, is OK and beneficial as they should not be allowed to produce seed unless it is desired. Cutting the stem and foliage is harmful in proportion to the amount cut. One quarter or a third of the stem may be cut without seriously damaging the bulb though delightful flower arrangements can be made with very short stems. If you want to cut with longer stems, make a special planting for this purpose in a cutting garden and then keep track of your cutting and only cut from a bulb every other year. You can soon tell how they withstand it and you can be guided accordingly.

**Feeding Your Lilies** Unless your soil is exceptionally fertile and rich, you will find that feeding will pay off in better growth and more bloom. Lilies are gross feeders and need a well balanced diet. Well rotted cow manure, rich compost or decaying leaf mold is very helpful if obtainable. Ordinary commercial plant foods are not desirable for most lilies and some years ago, with the cooperation with U. S. Dept of Agriculture Experiment Station workers, we put out a special Lily Food, designed primarily for lilies but useful with other flowers also. Our Lily Food is made completely water soluble and is to be applied in liquid form and the soil should be moist when applied.

Our customers have been using this lily food for seven years and their reports seem to prove it is tops in results when used "According to directions." Wares Lily Food is offered on page 43. Whatever you feed with, DON'T over feed. To do so you're just asking for trouble. In connection with fertilizers, make sure your soil is a bit on the acid side. If your soil or surface water is alkaline, make it slightly acid by scattering and watering in a little sulphur at the rate of not more than 3 pounds per one hundred square feet. Don't over-do it. If in doubt as to acidity, send a soil sample to your state agricultural experiment station and they will be glad to aid you. Peat moss, being slightly acid, is ideal for soil in which your plant lilies or for mulching.

**Early Winter** If winter comes early in your section, prepare your ground early so you will be ready to plant AT ONCE when your bulbs arrive. Then if you are threatened with a freeze-up before you get all your planting done, mulch heavily to prevent the surface from freezing. When ready to plant, remove the mulch and you can plant OK. If they freeze up solid after planting, no harm will result. But in any event plant as soon as possible after the bulbs arrive. And never allow your garden to go into the winter bone dry. A thorough soaking just before the final freeze-up will pay well in your plants wintering properly.

## Here it is—

A spray for Botrytis control

# "Microcop"

Don't let Botrytis spoil your lilies—  
do as the experts do.

*Please read carefully—*

If you've not tried this new spray (we introduced it in '46) for the control of this bothersome lily disease you should obtain a supply at once. Botrytis or Blight destroys the lower leaves of lilies and sometimes entire stems during humid weather. Micronized Copper (Microcop) with 101 Spreader was developed here in the Northwest where millions of lilies are grown and has proven almost 100% control. Unlike the commonly used bordeaux, it will not burn the tenderest seedling. It adheres even through heavy rains, keeps well in mixture and is very easy to clean out of your sprayer.

Botrytis, despite reports to the contrary, is not necessarily fatal to lilies. It may destroy the foliage but it does not attack the bulb, nor is it carried by the bulb and it does not winter over in the soil. Repeated tests have proven that plantings affected one season may be entirely healthy the next but loss of the foliage may weaken the bulb and threaten its survival. So be prepared to promptly combat botrytis when it first puts in its appearance. This spray is preventative rather than curative.

This new improved Micronized Copper and Spreader is all you need to combat botrytis but be sure you have it on hand BEFORE it is needed. A delay of but a few hours can make a great difference in results when it is needed.

This Micronized Copper and Spreader can also be used wherever you would use the old fashioned bordeaux and with much better results. It does not leave unsightly stains on foliage like the latter. Once you try this new spray, you'll never go back to the old fashioned messy bordeaux. It is so much safer and more sure in results.

If desirable you may add nicotine sulphate (Blackleaf 40) to control aphids at the same time at the rate of an ounce to 25 gallons. Aphids are the spreaders of lily mosaic and should definitely be controlled wherever lilies are grown. Both Copper and Spreader keep perfectly, so if you do not use it all this season you will be ready for next year.

### TRIAL SIZE

One pound of Micronized Copper and four ounces of the Spreader (enough to make 25 gallons), shipped postpaid for . . . **\$3.95**

### ECONOMY SIZE

Four pounds of Micronized Copper and one pint of the Spreader (enough for 100 gallons). . . . . Postpaid **\$6.95**

# Do it yourself . . .

## you can grow Fine Lilies from Seed

"Till now one dreamed not what could be done  
With a bit of earth and a ray of sun."  
—Lowell.

Growing Lilies from seed may well be the gardeners most thrilling adventure. That these tiny wafer-like seed can produce such breathtaking flowers is a never ending marvel. Seedling Lilies are disease free and unless infected from other Lilies, remain so. Many varieties are available and for a small outlay you can produce many fine bulbs. There is no fortune in Lily growing but there is a wealth of interesting adventure and pleasure far exceeding your fondest expectations.

We have divided the list into two groups, the easy and quick, and the slow and sometimes difficult. Both contain many fine varieties and the slower ones are well worth waiting for. From these seed you might produce the world's most beautiful Lily—who knows?

**SEED PRICE:** All seed is \$1.25 per packet. The amount of seed in each packet varies with rarity of the variety but is ample in most cases. Seed is sold at retail only. All seed sent postpaid—no C.O.D. 5 packets \$5.50

Slow germinating varieties are marked with an asterisk (\*). These usually germinate in six to sixteen months. The easy or quick varieties, not marked with an asterisk, usually appear in three to eight weeks. As this is written we are practically sold out on all seed so all orders will be filled late in the fall from fresh crop seed.

Our complete offering of lily seed varieties is listed on this page, subject, of course, to the crop. **We will not send out another** seed list in the fall as in previous years.

**SEED CULTURE LEAFLET—IF REQUESTED,** we will send with any seed order of \$3.00 or more, a copy of our cultural leaflet. On smaller orders, please send 15c for a copy. This leaflet is complete and well illustrated, a valuable guide to anyone who wants to succeed in this fascinating field.

**NOTE:** The greater part of our seed is hand pollinated to insure the highest percentage of viability.

### Complete Seed List for '57-'58

- \*Auratum (Type) No. 130
- \*Auratum Late No. 131
- \*Auratum Platyphyllum No. 139
- \*Auratum Hybrids Selected Reds No. 139-R
- \*Auratum Praecox Early No. 137
- \*Auratum Tri-Color No. 133
- Aurelian Hybrids No. 150-H
- \*Backhouse Hybrids No. 171
- \*Bellingham Hybrids No. 177
- \*Bolanderi No. 168
- \*Canadense Flavum No. 191
- Candidum No. 195
- \*Catesbaei No. 208
- Centifolium Hybrids No. 212
- Centifolium Hybrids Pink Selections No. 211
- Centifolium Hybrids Yellows No. 209
- Chehalem Hybrids No. 216
- \*Columbianum No. 220
- \*Columbianum Ingrami No. 219
- Coral Hybrids No. 366
- \*Cordatum New Form No. 224
- Dauricum Wilsoni Late No. 271
- Formolongi
- Formosanum x Longiflorum No. 432
- Formosanum Late White No. 318
- Frances Larrabee No. 178
- \*Giganteum Himalaicum No. 350
- Golden Harvest No. 367

- Grand Canyon No. 362
- \*Grayi No. 360
- Henryi No. 386
- \*Humboldtii Magnificum No. 398
- \*Japonicum No. 400
- \*Japonicum Platyfolium No. 401
- \*Kelloggii No. 406
- Longiflorum White Queen No. 433
- \*Marhan Hybrids No. 493
- \*Martagon Album No. 510
- \*Medeoloides No. 545
- Neilgherrense No. 568
- Nepalense Robusta No. 571
- \*Painted Lady Hybrids No. 592
- \*Pardalinum Giganteum No. 596
- \*Perryi No. 600
- Preston's Hybrids No. 624
- Princeps Creelman
- x Sulphur Hybrids No. 651
- Regale No. 680
- Regale Album No. 681
- \*Rubellum No. 712
- \*Rubescens No. 716
- Sargentiae Hybrids No. 757
- \*Speciosum Album Novum x Kraetzeri No. 775-A
- \*Speciosum Hybrids No. 780-H
- \*Speciosum Magnificum No. 779
- \*Speciosum Punctatum No. 778
- Sulphur Hybrids No. 793
- \*Superbum No. 796
- \*Tsingtauense No. 850
- \*Vollmeri No. 874
- Wallichianum No. 865
- Washingtonianum No. 880
- \*Wigginsii No. 808

**Slow germinating seeds marked with \***

**NOTE: Seed shipped in late fall after 1957 harvest—subject to crop.**

## What you need to know before you plant your fine Lilies . . .

Here we offer three books about lilies that are overflowing with helpful information on the entire subject. If you are truly interested in growing fine lilies, you need one or all of them. They are all different, all helpful. Each one offers not only the basic principles but a wealth of other data. The real lily "fan" will find all of them helpful and stimulating.

**LILIES FOR AMERICAN GARDENS** by George Slate. The most complete and up-to-date book on lilies published in America. A book for the amateur written for American Conditions. 250 pages, illustrated. Postpaid \$5.00

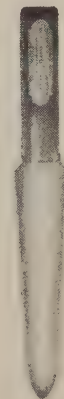
**LILY REFERENCE CHART** by Mr. E. L. Kline, famous authority and grower of fine lilies. 2700 items of data on 225 lily varieties. Needed by every library, garden club, bulb dealer and garden enthusiast. Six big pages 12½x16 inches. Postpaid \$1.00

**LILIES OF THE WORLD** by Woodcock & Stearn. This book is now out of print.

**THE NEW BOOK OF LILIES** by Jan DeGraaff. The most recent and one of the best books about lilies to be published. It's overflowing with practical information, lily lists and data the home gardener will find very useful. Propagation, hybridizing, growing in the greenhouse, exhibiting lilies and many other phases of lily culture are delightfully presented. Prepaid \$3.50

**SUCCESS WITH LILIES** by Romaine B. Ware. See page 43 for full description of this new revised edition. And note the excerpt from a letter from a Philadelphia customer.

### A FINE NEW TROWEL



Here's a grand new trowel you will enjoy. It's made of heavy stainless steel—will never rust—so strong and sturdy, it will last your lifetime, with a comfortable hardwood handle that will not come loose. The narrow blade is 7 inches long (trowel 12 inches over all). Ideal for bulb planting and all transplanting. **Mailed post-paid anywhere—\$2.00.**



IN A WOODLAND SETTING THESE ARE A RARE SIGHT INDEED —  
ESTABLISH THEM BY PLANTING THE THREE SIZES AS OFFERED BELOW

# *Giganteum Himalaicum*

Unusual—gigantic—spectacular—Truly  
words fail us describing this beauty

If you have a semi-shady spot with a deep well drained soil amply filled with humus, you'll find this one of the most spectacular flowers you can plant. It's "different," unusual and easily one of the most talked of garden beauties. Don't overlook it.

**GIGANTEUM Himalaicum**—350—A magnificent lily worthy of any garden that can make it feel at home. Much has been written about this huge giant of the woodland. Blooming stalks grow from six to twelve feet tall with ten to twenty great trumpets seven to eight inches long. The big fragrant flowers are white, tinged with green outside, striped and splashed red-purple inside. Unless you have actually seen this wonderful lily, it is not easy to imagine what a majestic picture it makes.

This majestic lily has been described as being tender but we know of its wintering in central Minnesota with good protection. And Minnesota winters are not exactly balmy. Too, it has proven hardy in northern New York state and eastern Massachusetts. In light woodland with properly prepared soil (see below) it should be perfectly at home. A little extra effort is more than repaid when they bloom.

This lily grows very differently from most kinds. From seed, the bulbs require six or seven years to flower and after blooming the old bulb dies and leaves numerous offshoots, most of which will flower in three years. We suggest you plant this variety in all sizes offered and within a year you should have it well established and enjoy its magnificent bloom every year. The giant size bulbs, as large as a small grapefruit, generally bloom the first year. Sometimes they sort of "sulk" a year while establishing themselves.

The large size generally flowers the second year, sometimes, not until the third. But from then on you should have practically continuous bloom each year by resetting the offshoots left by the bulb after flowering.

Success with this magnificent and most interesting lily demands a suitable location in partial shade where hot sunshine can not reach it. Too, the soil must be very well filled with humus, "frothy", is probably the word that best describes the condition needed.

The bulbs are planted with but an inch of soil over the top and they must never want for moisture. Good drainage is an absolute "must". In cold sections give them a mulch of evergreen boughs and some peat moss. DO NOT mulch with leaves or any material which will hold moisture and decay or smother the bulb. These bulbs are quite different from most lily bulbs. If you could cut them open in the fall you would find large leaves surprisingly well developed, lying dormant awaiting the call of spring. This bulb needs to sort of "breathe" during the winter and the evergreen mulch allows air to reach them even if covered with snow.

We offer this lily in three sizes, jumbo, large and medium. The huge giant bulbs do not survive after flowering but each one leaves a dozen or more offsets which may be expected to bloom the third year. These offsets should not be disturbed for one year after the big bulbs flower, then may be reset: All in all it is a most fascinating variety, not only for its spectacular blooms and giant size but for its peculiar life habits. Established groups are indeed gorgeous.

Medium . . . . . 3 for \$ 8.15, each \$2.95  
Large . . . . . 3 for \$12.00, each \$4.25  
Jumbo . . . . . 3 for \$19.25, each \$6.95

**SPECIAL! 3 bulbs, one each size . . \$13.85**

# Rare Species

For Collectors and  
Connoisseurs

**JAPONICUM**—400—One of the most beautiful of all the pink lilies, an exquisite trumpet-shaped bloom varying from pale pink to deep rose. Not an easy lily but charmingly fragrant, worth every effort it demands. PD 4 inches. Small bulbs: 3 for \$3.95, ea. \$1.45

**JAPONICUM Platyfolium**—401—This is a hardier form of this lily considered by some to be a hybrid with Rubellum. Mr. Kline finds it more satisfactory in all respects than No. 400 above, or No. 402 on page 19. He recommends it very highly. The foliage is broader and the plant is more vigorous. Delightfully fragrant and lovely as a cut flower. It comes in various shades of pink and rose-pink. Ht. 2 to 4 ft. PD 4 in. May blooming.  
3 for \$4.00, each \$1.50

**JAPONICUM Pure White**—399—A rare and lovely form, extremely dainty, delightfully fragrant and very scarce. Difficult.  
Each \$2.95

**MACKLINIAE**—502—We offered this in '53, we believe for the first time in America. The famous Englishman, F. Kingdon-Ward, discovered it in India near the Burma border in 1946. For the collector who wants something "different", this is a true little beauty. The bloom is delightfully informal, a widely opened bell type somewhat similar to the rare Bakerianum. It's a lovely light pink, flushed but unspotted. Give it a cool semi-shady location, a loose porous soil and never must it want for moisture. This is a lily for the connoisseur, rare and very unusual. Ht. 1 to 3 ft. PD 4 in. June-July.  
3 for \$15.95, each \$5.65

**TSINGTAUENSE**—850—A rare species from China, similar in growth habit to Colcolor but it is orange in color and the flowers are carried in an umbel rather than scattered plant in part shade, in moist soil. Here in Oregon it is quite charming and we are glad to offer it. July. Ht. 1½ to 3 ft. PD 3 in.  
3 for \$5.65, each \$1.95

**CORDATUM**—224—I'm listing this new form of an old lily on this page because of its great similarity to the famous giant lily Giganteum. Its culture, habit of growth, soil preferences and exposure are the same as for Giganteum. Many gardens which have no place for the 8 to 11 foot tall Giant lily can plant this new one and enjoy its unusual effect. This Cordatum is free flowering, grows 5 to 6 feet tall. Study the cultural directions for Giganteum and check your garden. In the spring the foliage of Cordatum is crimson which gradually changes to green with a coppery sheen. Blooms funnel-shaped, milk-white in color with golden-yellow streaks inside and red-brown spots. July flowering. Cover top of bulb only one inch.

3 for \$6.25, each \$2.25



*"Great things are done when men and gardens meet  
That are not done by jostling in the street."*

# Unusual

Among the specie lilies we find many which are rare indeed. This catalog offers some of them, coming originally from the far corners of the world but now grown right here in Oregon, fully acclimated to American conditions. Among them are many beautiful things. A few are offered on this page while others will be found elsewhere in this catalog. Truly, they are lilies for the connoisseur and collector. Most of them are not too plentiful but you will find them eminently worth while.

**LANKONGENSE**—412—This is a very rare species we offered for the first timelast season. Though originally discovered in 1886, as far as we know, last year was the first time it has ever been offered in this country. The blooms are medium size, recurved and pendant. When first open they are a pale rose-pink that deepens with age, the spotting is purple and they are delightfully scented. It blooms out here in August and seems to delight in a porous loam soil well-filled with leaf mold. Semi-shade seems to be most to its liking, never lacking in moisture and it does not tolerate lime. The bulbs are small but the plants are vigorous and it is known to have produced as many as 15 flowers on a stem when well established. Ht. 2 to 4 feet. PD 4 in. 3 for \$8.35, each \$2.95.



LANKONGENSE

**NEILGHERRENSE**—568—A rare and handsome lily from the hills of southern India. Its native habitat is the most southern of all known lilies and hence, except in the south, it must be grown inside or in pots which may be taken in to avoid freezing. Blooming August-September, producing strongly fragrant, trumpet-shaped flowers up to a foot in length, held horizontally, it is strikingly handsome. Color is pure white with rich yellow within the tube. Ht. 2 to 3 ft. Demands a warm sheltered spot with soil almost pure leafmold. PD 5 inches.

3 for \$15.95, each \$5.65

**WALLICHIANUM**—865—A very rare and handsome lily but not hardy outside where the ground freezes. It is funnel-shaped with a slender tube and wide spreading mouth, creamy-white within and green outside. A lovely fragrant lily for the greenhouse or outside in the warm sections. Himalayan foothills are its home where it grows on open grassy hills. A very scarce lily. Ht. 3 to 6 ft. PD 5 in. August-September.

3 for \$15.95, each \$5.65

**POLYPHYLLUM**—620—This fragrant, nodding, white lily, splashed with purple inside is one of the rarest and not the easiest to grow. The high valleys of famed Kashmir are its home. The soil is moist but well drained and thickly matted with leaves. Here in the Northwest we find it does well out in the sunshine but where the sun gets really hot, partial to full shade is probably best. A good location would be the Rhododendron bed where the surface is shaded but the stems reach up into the sunshine. Ferns would be an ideal ground cover. Heights 4 feet. PD 4 inches. late June. Selected bulbs, \$6.95.

**PYRENAICUM**—666—Commonly known as the Yellow Turks Cap and especially desirable as among the earliest of all lilies to bloom. The gay little Martagon type blooms are a rich greenish yellow spotted black with prominent anthers bearing brilliant scarlet pollen. A hardy little lily not particular as to soil and excellent for partial shade in the wild garden. Heights 2 to 4 feet. PD 3 inches. May-June. Each \$4.50

**NOBILISSIMUM**—574—This rare and very beautiful lily is definitely a tender subject where the ground freezes but in the cool greenhouse it is real gem. It's a lily for the connoisseur, carrying up to four large semi-bowl shaped flowers, pure white with dark brown anthers. It's pleasantly fragrant, early summer flowering. In the south where the ground does not freeze and in California, it should prove a treasure indeed. Outdoors it sprouts very early and should be protected from frosts. Our stock is grown from seed and free from disease. Heights 1½ to 2 feet. PD 5 inches. Each \$6.95

**NEPALENSE**—570—A very rare and "different" lily from Burma. One of the most unusual lilies in cultivation. Though long considered tender, Oregon's '48-'49 winter down to well below zero did not harm those planted out in the open field. Nepalense demands a leafmold soil, perfect drainage, ample moisture, part shade and a ground cover. The small bulbs produce nice blooms as it is a stem rooting variety. July. Heights 1½ to 3 feet. PD 4 inches. 3 for \$6.95, each \$2.50

NEPALENSE



**NEPALENSE Robusta**—571—This is a recently discovered form of this unusual and rare lily. This lily has been known since 1820 but has always been considered a tender subject primarily for the greenhouse. However, it has been grown outside here in Oregon for two decades and has withstood being frozen solid at temperatures down well below zero. Last winter tiny seedlings in a flat were frozen solid at fifteen or below for several days and came through OK. We'd recommend a light protection where the ground freezes. This new Robusta form has larger blooms, heavier in texture which are carried on wiry stems 2 to 2½ feet tall. The color is most unusual and intriguing, pod-green with purple madder throat. July flowering, partial shade. PD 4 inches. The bulbs are small. Culture same as for No. 570 above. Flowering size.....3 for \$16, each \$5.65

## Please note—

Species lilies are, most of them, one might say "finicky" in their soil and drainage requirements. So give them a bit of extra attention when planting and they will reward you handsomely.

# Hardy Cyclamen

## Rare and Beautiful

Give your shady garden a real lift with these truly unusual Hardy Cyclamen. They are not only very beautiful both in foliage and bloom but extremely rare as well. Given the right soil, which is very simple, they will thrive and grow for many years. Each year the corms get larger and produce more flowers. Corms a foot in diameter producing literally hundreds of blooms for weeks on end are not uncommon. We can ship these hardy corms most any time of the year the ground is not frozen. To the west coast and the south we ship every month. They are bothered by almost no pests or diseases, practically foolproof. Full planting and cultural directions are sent with each order. By planting a few corms of each species, you may have them in flower almost the entire growing year. We advise planting in clumps of three wherever possible for the best effects. See the special No. 79-L for three each of three kinds to supply a long season of flowering.

SEE PAGE 45 FOR CYCLAMEM PICTURE IN COLOR



A single large corm of Cyclamen Neapolitanum held upon the palm of a hand. Note the large display of bloom. They keep up this display for many weeks in the fall.

### Spring Flowering

**CYCLAMEN Atkinsi Mixed**—1176—(Jan.-Mar.) The earliest of all to bloom. Pink to pale rose flowers on a 4 to 6 inch stems. Leaves appear before and with the flowers and are deep green lightly mottled silver white.

Fl'g. . . 3 for \$3.75, ea. \$1.35, Doz. \$14.50  
Lge. . . 3 for \$5.45, ea. \$1.95, Doz. \$20.95

**CYCLAMEN Atkinsi Album**—1169—The white form of this important early flowering strain. You'll love it.

3 for \$5.45, each \$1.95, Doz. \$20.95

**CYCLAMEN Atkinsi Roseum**—1171—A lovely rose-pink. A true gem where springs start in January. Supply limited.

3 for \$5.45, each \$1.95, Doz. \$20.95

**CYCLAMEN Atkinsi Rubrum**—1168—This is a deep rosy-crimson form of the above, the best of the Atkinsi lot. Not available before now.

3 for \$5.45, each \$1.95, Doz. \$20.95

**CYCLAMEN Balearicum**—1177—(Feb.-Mar.) Light blush pink. Large leaves appear before and with flowers. Mottled silver with bright green edges.

3 for \$10.00, each \$3.75

**\*CYCLAMEN Coum**—1174—(Feb.- March) Similar to Atkinsi but with deep crimson-rose blooms on 4 to 6 inch stems, leaves deep green without mottling. Very rare and beautiful.

3 for \$3.75, each \$1.35, Doz. \$14.50

**CYCLAMEN Coum Album**—1179—Same as above except the blooms are white with a red base. Supply is limited as very few are produced

3 for \$5.45, each \$1.95, Doz. \$20.95

**CYCLAMEN pseudo Ibericum**—1180—March-April. A very rare species with large crimson flowers on 6 inch stems. Leaves come with blooms, green, variegated silver and white.

3 for \$7.95, each \$2.95, Doz. \$30.95

**CYCLAMEN Libanoticum**—1175—(Mar.-April) Large blush pink blooms, not as recurved as other species and therefore appearing even larger. 4 to 6 inches tall and slightly fragrant. One of the rarest species in cultivation. Foliage light green mottled silvery white.

3 for \$7.95, each \$2.95

**CYCLAMEN Repandum**—1173—(Apr.-May) Bright crimson flowers on 4 to 6 inch stems. Leaves are pointed with serrated edges, bright green marbled silver white. This is one of the rarer species and very lovely.

3 for \$3.75, each \$1.35, Doz. \$14.50

### Summer Flowering

**\*CYCLAMEN Europaeum**—1177—(July-Sept.) This summer flowering species from central and southern Europe has distinctly fragrant crimson-rose blooms on 5 to 6 inch stems produced over a long period. The bright green foliage, marbled silvery white is almost evergreen.

3 for \$4.75, each \$1.65, Doz. \$18.00

### Fall Flowering

**CYCLAMEN Cilicicum**—1178—(Sept.-Nov.) Light pink flowers a bit later than Neapolitanum extending the season almost into winter. The leaves are small, very distinct, deep green, beautifully mottled silver on the edges. A native of Sicily.

3 for \$4.75, each \$1.65, Doz. \$18.00

**CYCLAMEN Neapolitanum**—(Aug.-Oct.) This is the best known of the hardy forms and deservedly the most popular. Both pink and white forms are available and it may be had in several sizes. Both white and pink forms flower on 4 to 6 inch stems with large leaved attractive foliage which appears after the blooming starts.

**\*CYCLAMEN Neapolitanum**—1170—Pink.

Fl'g: 3 for \$1.65, each \$ .65, Doz. \$ 6.35  
Large: 3 for \$3.65, each \$1.35, Doz. \$14.50  
X-Lg: 3 for \$6.45, each \$2.25

**CYCLAMEN Neapolitanum**—1172—White.  
Med.: 3 for \$3.75, each \$1.35, Doz. \$14.50  
Large: 3 for \$5.30, each \$1.95, Doz. \$20.95

## Cyclamen Special 79-L

Three corms each of three varieties, namely Coum No. 1174 for spring, Europaeum No. 1177 for summer, and Neapolitanum No. 1170 for fall. You may have months of delightful bloom with these year after year. You'll love them and want to try all the others.

3 of each of three varieties **\$8.35**

5 of each of three varieties **\$14.35**

## Cyclamen Special No. 29-L

**CYCLAMEN Neapolitanum**—Pink in small corms, most of which will flower the first year. Ideal for massing in the shady rock garden or wild garden. Good for grouping at the front edge of the shady border.

25 for **\$6.25** Doz. **\$3.25**

## Cyclamen Seed No. CL

Growing from seed is the only method for propagating Cyclamen. The corms neither multiply nor divide. Fresh seed germinates promptly when sown in late summer or early spring. We offer a liberal mixed packet made up of at least six kinds, including a direction leaflet. Special CL **\$1.50** Postpaid.

## Below . . .

Bloom of Cyclamen Neapolitanum approximately actual size.





GET THE NEW 2nd EDITION OF  
**SUCCESS WITH LILIES**  
 Revised—Enlarged—Illustrated  
 By Romaine B. Ware—\$2.00 Postpaid

This book, first published in 1948, is now in its third printing. The new edition is revised, enlarged and illustrated. It's an "answer book," covering the thousands of questions we're asked about the how, when, where and why of growing fine lilies. The hundreds of letters I've had from all over the country would seem to indicate it has been well worth while. It covers selection of location, soil, its preparation, choosing varieties, watering, feeding, winter care, a little on diseases and a wealth of other information.

This 3rd edition also contains several planting plans and numerous garden pictures featuring lilies along with other plants. Lilies should not be planted in a garden by themselves. They need to be associated with other plants. Lilies are not difficult but they do demand a bit more knowledge than growing zinnias or marigolds. And I'm sure you will agree with me that they are worth a little more effort than average flowers. They're a "point-with-pride" type of flower. Your garden can easily become famous if you will just take time to learn the how of growing lilies. You can easily enjoy a dozen to twenty-five different varieties of lilies and if you do your cup of joy will more than overflow.

**MAIL \$2.00 FOR YOUR COPY TODAY**

THEY SAY . . . .

Philadelphia, Pa.

*"I wish to take this opportunity to say that your little book is very informative particularly for the amateur, as I obtained more information from it than from books on the subject which cost \$5.00."*

M. O. S.

**SPECIAL DELIVERY**

OR

**SPECIAL HANDLING**

For over a decade we have been urging our customers to have us ship their lily bulbs **SPECIAL DELIVERY OR SPECIAL HANDLING** and the gratifying letters we have had seem to prove, without a doubt, it is worth while. We pay the regular parcel post on all orders but **NOT** the Special Delivery or the Special Handling fee.

Special Delivery is urgently suggested if you live in a city or town with house to house carrier service. If you live in the country or a smaller town without carrier service, Special Handling will rush your package to your post office with the speed of a first class letter rather than the much slower regular parcel post. Special Delivery, where available, gives immediate delivery any day of the week including Sundays, holidays or Saturday afternoon.

For Special Delivery, please send the fee, 35c, added to your remittance. For Special Handling, add 15c. **DO NOT SEND BOTH THE 35c AND THE 15c.** We earnestly urge this extra service to all points east of the Rocky Mountains or south of San Francisco. Lilies are not like Glads or Tulips. They are not dry corms but fresh dug, living plants full of moisture which should not be permitted to dry out. Careful checking finds that packages to the middle west arrive the second or third day and to the east coast and deep south the fourth or fifth day. Scores write us their bulbs came so quickly they looked as if dug in their own gardens. Last year almost 70% of our orders went this Special service. So, in accordance with the facilities of your post office, have us send your bulbs either Special Delivery or Special Handling. Please indicate your wishes on the order blank. I know you will be well pleased.

"THE DIFFERENCE SPECIAL DELIVERY MAKES"

New York City

*"Your splendid bulbs arrived Monday, Dec. 7th. It's amazing, the difference SPECIAL DELIVERY makes. My order was mailed Monday, Nov. 30th. You could not have gotten it before Wednesday. Yet, here is the order all the way across the continent and at my door early Monday morning."*

Mrs. D. M.

**HERE'S A WHOLE LILY GARDEN**  
**Fanciers' Lily Special**

**34 Bulbs**  
**12 varieties No. 16-L \$24<sup>95</sup> Postpaid**

Again we offer this special to fill the demand of so many who write asking that I select a group of lilies, easy to grow, flowering early to late, with a wide range of colors and which will succeed most anywhere without special skill. Here's a whole garden of them—twelve varieties, one to three of a kind. Thirty-four bulbs in all. And among them are some of the finest new hybrids.

Included are lovely pink Shellrose, Moonlight Hybrids, Auratum Platyphyllum, DeGraaff's Hearts Desire, Golden Splendor, the late Dauricum, Joan Evans, Croesus and six others, no Regals unless requested. Each variety packed separately and labeled—all are full flowering size, fresh dug and shipped in October, Special Handling. Special No. 16-L.

**Catalog value over \$30.00**  
**You Save Over \$5.00**  
**\$24<sup>95</sup> Postpaid**



CLEMATIS MME. EDOUARD ANDRE

**Mme. Edouard Andre**—73C—A bright velvety red with slight purplish cast. A gorgeous color often found in the older oriental rugs. Usual height seven feet. An exceptionally profuse bloomer starting in May.

**Susan B. Emery**—77C— You'll love the exquisite perfection of this beauty. The blooms are very large, six to seven inches on established plants azure-blue in color with the delicacy of an orchid. A profuse bloomer, June till frost. Normal height six to seven feet.

**Jackmani**—71C—One of the most popular of all large flowered clematis, velvety violet-purple and a very profuse bloomer. Starts flowering in June and continues through the summer and well into the fall.

**Henry**—70C—A stunning creamy white, very free blooming with flowers six to eight inches across. Begins flowering in May. Normal height 8 feet.

**Lanuginosa Candida**—72C—A pure white, early flowering species. A strong grower that will climb 12 to 15 feet with support. Highly ornamental foliage. The blooms are fine cut flowers.

**Mme. Baron Veillard**—74C—The warm pastel lilac-rose of this French introduction has won great popularity. Its lovely color together with its very profuse blooming continuing until frost makes it one of the best. The flowers of moderate size are produced in fine clusters.

**Nelly Moser**—78C—A gorgeous hybrid of Lanuginosa, the pale mauve and white petals are heavily rayed with brilliant red. A very stunning, unusual flower, free blooming and vigorous.

**Ramona**—76C—A delightfully charming lavender-blue, growing vigorously and blooming especially well during the summer months.

**The President**—79C— No picture does justice to this magnificent Clematis. It is a reddish-plum-violet, and a very free-flowering variety. The colored pictures but poorly portray the perfection of these beauties.

**Single Plants \$2.25 postpaid    Any three plants \$6.25 postpaid**  
**Any five plants, your selection, \$10.00 postpaid**

Clematis plants are shipped in late spring or early to mid-summer. They can not be shipped in the fall or winter except to the south (if the plants are available). Plants set out in late spring may be expected to flower the first summer.

# Hardy CLEMATIS

## FLOWER OF RARE AND EXQUISITE BEAUTY

The enthusiastic reception given our offering of these lovely hardy clematis exceeded our wildest expectations. From every state came reports that never had they received such vigorous healthy plants. Clematis are very hardy. They withstand below zero with light protection. Their soil requirements are simple and easy to provide. Complete planting directions come with each order. As with lilies, we offer only the best and I'm sure these clematis will measure up to our standards and perform in your garden as you have a right to expect.

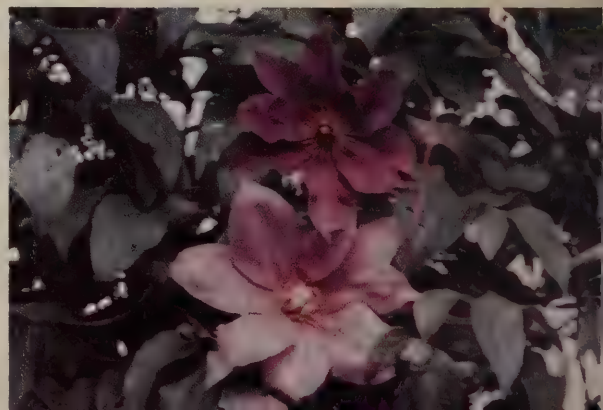
CLEMATIS NELLY MOSER



CLEMATIS SUSAN P. EMERY



CLEMATIS "THE PRESIDENT"



# THE GARDEN IN YOUR FUTURE

*Start with good flowers and you're  
on your way to success as  
a good gardener*

A flower of real quality demands no more space in the garden and takes no more care than one of mediocre quality BUT the difference in effect and satisfaction goes far beyond the cost.

## *Eremurus*

The Foxtail Lily or Desert Candle

Words fail me to describe these charmingly graceful almost dignified and unusual plants. Pictures can not do them justice. Only when you see them in flower can you appreciate their garden beauty. These towering spires of Eremurus, the Foxtail Lily may easily be the highlight of your late June garden. For spectacular effects, few others vie with them. A group of three or five plants in a sunny border against a green background make a never-to-be-forgotten picture. Why more gardeners have not discovered their possibilities, I'm unable to understand.

Eremurus are perfectly hardy even in the colder sections of the country but as they start into growth early, a protection of a light coarse mulch is advisable to avoid injury from late frosts. Don't smother them. Eremurus relish a rich well-drained soil in full sun. In heavy soils add plenty of sand. In extremely cold areas, mulch after the surface freezes and cover with an inverted box to retard early growth.

Eremurus Pastel Hybrids afford delightful color effects with spires four to five feet tall, the upper third to half of the stem closely set with bell-shaped flowers, star-like in effect. They flower for two to three weeks depending upon the weather. After flowering the plants disappear entirely above ground. To fill the blank space they leave, it's suggested you plant the perennial Gypsophila Bristol Fairy in back of them for July blooming and for later color, in front of them, plant a mass of Eupatorium caelestinum (Mist-Flower).

3 for \$8.35, each \$2.95, Doz. \$30.00

*See page 42*

On page 42 we describe fourteen varieties of Hardy Cyclamen as well as offering two specials of these rare flowers. We also offer Cyclamen seed. They are a real opportunity to add new and unusual flowers to your garden.

CYCLAMEN NEAPOLITANUM



EREMURUS — A CUT FLOWER SUPREME

As a cut flower these unusual beauties last two to three weeks and bloom out to the very tips. Cut the stems every few days and strip off the faded lower blooms. They are one of the most spectacular cut flowers imaginable.

EREMURUS





## PLANT MUTATION EXPERIMENT KIT WITH COLCHICINE

"Ready-to-Use"

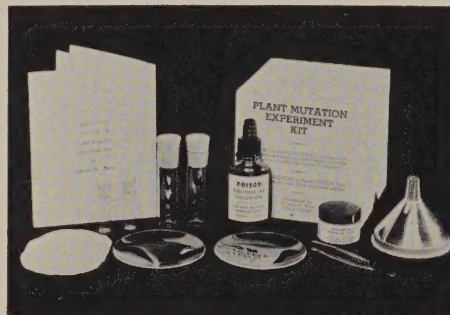
This "MIRACLE DRUG" causes  
Wondrous plant mutations

A simple scientific chemical means of  
creating new forms in flowers, all  
plants. Easy to use.

The smaller of the two Carnations is an average size flower. The large bloom was produced at the Beltsville Experiment Station through breeding and the use of the drug Colchicine. Scores of similar results have been produced by this technique.



**Above** — Applying Colchicine salve to the calloused stem of African Violet leaf. The so-called Supreme Violets were first developed through use of this drug by one of our customers with this Experiment Kit. The drug can be used on seeds, seedlings and buds just starting to grow. Any keen green thumb gardener can master the simple technique. You can carry on experiments all during the growing season or with a greenhouse, all the year around. **At the right** — the Kit includes Colchicine solution and salve together with the necessary equipment and simple directions for Plant Mutation Experiments. We ship the Experiment Kit, complete with directions, **\$5.00** POSTPAID for.....



## Erythronium

### AMERICAN SPECIES

**Americanum**—1190—Large pinkish-yellow.

**Californicum**—1180—White, chrome yellow center.

**Giganteum**—1186—Cream-white, with greenish-yellow base, marginal chestnut red. Heights 8 to 16 inches. April. Marbled foliage.

**Hendersonii**—1182—Light purple, center deep maroon; very striking.

**Purdyi**—1181—Large pale lemon-yellow blooms on 8 to 10 inch stems. Foliage olive green, lightly mottled. April.

**Revolutum-var. Johnsonii**—1183—Leaves mottled with dark brown, flowers dark rose.

**Tolumensis**—1192—Golden yellow, quite distinct, forms large clumps by offsetting.

### EUROPEAN SPECIES

**Erythronium Dens-canis.** These are quite distinct from our native species. The foliage is deep green, with beautiful mottling of dark bronze. The flowers are large but on short stems nestling among the foliage, April-May.

**Frans Hals**—1195—Light reddish violet. Very showy.

**Pink Perfection**—1193—Bright clear pink. Early.

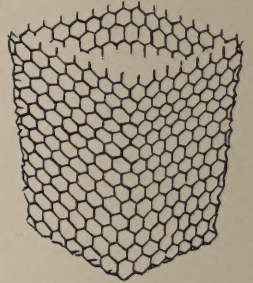
**Rose Queen**—1194—Deep pink.

**Snowflake**—1196—White.

## "Protecko" WIRE BASKETS

can save your fine Lilies  
from moles and gophers

Customers write us that protecting their lily bulbs with our wire planting baskets has proven most worthwhile. Not only do the baskets protect from damage by moles, gophers and their followers, the field mice, but probably of equal importance, they protect from accidentally injuring or killing the bulb by cutting it with the hoe or cultivator. This later danger is far greater than many realize. The baskets simply form an underground "fence" around the bulb and keep the hoe or cultivator from unintentional injury. Fine lily bulbs are too valuable to take chances with. The small cost of the baskets is more than offset by the possible losses they eliminate. The baskets are made of half-inch poultry mesh, imported from Europe as the wire is no longer made in this country. We have them made by physically handicapped people.



We have found a basket 8½ inches deep, 6 inches across the top and 4½ across the bottom to be the most useful size. The wire is heavily galvanized and lasts almost indefinitely. Roots spread freely through the baskets but burrowing rodents are prevented from reaching the bulbs. If desired, bulbs may be planted right in the baskets and then be carried out and set in prepared spots. Baskets should be set with their top edges right at the surface. Shipped postpaid.

**Each 69c, Doz. \$7.95, 100 for \$62.50**

## Fritillaria

A woodland bulb with nodding flowers often resembling small lilies. Lovely for naturalizing or the rock garden.

**Meleagris Aphrodite**—1211—A fine strong growing white variety.

**Meleagris Artemis**—1212—Grayish-purple chequered. Very fine and unusual.

**Meleagris Pomona**—1216—Flowers white, checkered pink.

**Meleagris Poseidon**—1214—Whitish, chequered purple. Very large blooms on six inch stems.

**Meleagris Saturnus**—1215—Flowers pinkish, chequered. Very rare.

**Pallidiflora**—1208—Large pale yellow flowers, bell-shaped, 8 to 12-inch stems.

**Recurva**—1205—The most striking of all Fritillarias—bright red outside, brilliant yellow inside, spotted red.

**Thunbergii**—1204—A graceful, distinct species, creamy white, veined green with as many as ten blooms to a plant. Partial shade. Heights 1½ to 2 feet.

## PRICES OF ALL ERYTHRONIUM AND FRITILLARIA

**3 Bulbs of ONE KIND for \$1.00, Doz. of ONE KIND \$3.75. No orders for less than 3 of ONE KIND.**

# Lily Index

Ace	15
Afterglow	22
African Queen	23
Amabile	6
Amabile Luteum	6
Amythyst Temple	13
Apricot Queen	23
Apricot Trumpets	16
Auratums	9
Aurelians	4, 11, 17, 30
Backhouse Hybrids	30
Bellingham Hybrids	20
Bolanderi	31
Brandywine	6
Bright Cloud	16
Brocade	28
Brownii	6
Cameo Hybrids	13
Canadense	7
Cavalier	7
Centifolium Hybrids	
See Olympic Hybrids	8
Cernuum	7
Chalcedonicum	6
Chehalem Hybrids	28
Cherokee	6
Columbianum Ingrami	31
Coral Hybrids	6
Concolor Racemosa	6
Cordatum	40
Corsair	14
Croesus	22
Croft	14
Crow's Hybrid	7
Cyrus Gates	7
Dalhansonii	28
Dauricum Wilsonii, late	29
Destiny	5
Dominion Aurelians	16
Dr. Abel	5
Edmund L. Kagy	35
Enchantment	21
Estate	14
Eventide	16
Felicity	22
Fiesta Hybrids	22
Firecrown	22
Fireflame	22
Formosanum	10
Frances Larrabee	15
Giganteum Himalaicum	40
Gold Cup	33
Gold Flake	7
Golden Chalice	29
Golden Gleam	10
Golden Harvest Hybrids	32
Golden Nugget	30
Golden Regal	17
Golden Splendor	5
Golden Trumpet	16
Grand Canyon Hybrids	10
Grayi	31
Green Dragon	23
Green Mt. Hybrids	21
Guinea Gold	28
Hansoni	18
Harmony	22
Heart's Desire	4
Henryi	18
Humboldtii Magnificum	18
Humboldtii Hybrids	20
Ida Jane Calif.	35
Jade Temple	13
Japonicum	40
Jillian Wallace	12
Joan Evans	22
Kelloggii	31

King William	30
Lankongense	41
Little Star	37
Longiflorums	14
Lucky Star	22
Mackliniae	40
Maiden's Blush	20
Marble Temple	13
Margaret Johnson Hybrids	15
Marhan	28
Martagon	29
Marlyn Ross	35
Medeoloides	18
Mega	30
Mei Ling	16
Michiganense	31
Mid-Century Hybrids	20
Moonlight Hybrids	33
Mountaineer	33
Mrs. R. O. Backhouse	28
Navajo	15
Neilgherrense	41
Nobilissimum	41
Occidentale	31
Olympic Hybrids	8
Oregon Giant	37
Painted Lady Hybrids	28
Palomino	22
Pardalinum Giganteum	33
Parryi	14
Paulina Kline	35
Peter Puget	18
Pink Trumpet	16
Polyphyllum	41
Pride of Oregon	15
Prosperity	12
Pumilum	10
Pyrenaicum	41
Rainbow Hybrids	23
Red Fortune	12
Red Star	10
Regale	17
Rubellum	26
Ruby	37
Sargentiae Hybrids	10
Samarkand	26
Sceptre	28
Shellrose Hybrids	32
Shuksan	30
Siam	26
Sirdar	26
Sovereign	14
Speciosum	36, 37
Sulphur Hybrids	34
Sun Bronze	30
Sunburst Strain	4
Sunset	33
Sunset Improved	30
Sunstar	13
Sun Temple	13
Superbum	30
Sutton Court	28
T. A. Havemeyer	35
Tangelo	22
Temple Hybrids	13
Tenuifolium—See Pumilum	10
Tom Barry	35
Tsingtauense	40
Typhoon	14
Umbellatum Incom	34
Valencia	21
Valiant	34
Vollmeri	31
Wallichianum	41
Washingtonianum	15
Wigginsii	31
William Bates	35

# Matilija Poppy

"ja" pronounced "ha"

**MATILIJ** Poppy—1475—I'm sorry to say we are still unable to offer plants of this much-wanted perennial. We are making some progress and I'm hoping next year's catalog will be able to list them. They will not be offered until I'm sure the plants are top quality which can be expected to grow and thrive for you.

## No Bulbs or Plants Shipped to Canada

Due to the amount of red-tape involved to comply with requirements of Canadian Customs, we no longer accept any orders for bulbs or plants to be shipped to Canada. We are sorry to have to make this decision but the added work is more than we have time or inclination to assume.

## We Pay the Postage

On orders of \$5.00 or more within the U.S. we pay the postage unless otherwise stated. On orders sent out of this country please add 10% to cover postage and extra handling. On all orders less than \$5.00, kindly add 50¢ for postage and handling.

## Shipping Dates

All lily bulbs are dug as soon as they mature. Shipping starts about October 1st and continues into late November. We try to ship to arrive at the proper planting time for your area. Prepare your ground before the bulbs arrive and plant as soon as possible.

## Please Order Early!

This is very important as every year many varieties sell out early and hundreds of customers are disappointed. Lily bulbs are not like most plant material. It takes years to produce them and demand is increasing faster than the supply. Each year we sell out of practically everything that can be shipped.

## Send Your Order Now!

As soon as you have made your selection. Don't wait till later. Many varieties will be short and early orders get first consideration. Most orders are shipped in two or more lots as soon as they mature. This causes extra work and expense but we believe you are better served and your success is our success.

## But Please - - -

Help Us and Yourself  
**ORDER EARLY**



**Above**—The Naked Lady Lily  
Page 26

**Right**—Destiny (DeGraaff)  
Page 5

**Lower Right**—Hymenocallis  
Page 31

**Below**—Auratum Platyphyllum  
Page 9

